

# 2025 Guide to Metering



This guide was prepared with information from manufacturers, distributors and Linn County REC's tariff. Its purpose is to provide information on requirements for installing metering for electric accounts served by Linn County REC.

**\*\*UPDATED ANNUALLY\*\***

- Updated 2025-01-09
- Updated 2024-06-18
- Updated 2024-01-02
- Updated 2023-04-01
- Updated 2022-07-11
- Updated 2022-04-06



**Linn County  
Rural Electric  
Cooperative**

Available at <https://www.linncountyrec.com/my-cooperative/electric-service/metering>

METERS	PAGE(S)
CLASSES OF SERVICE, SERVICE TYPES AND FORMS .....	1
METER FORMS AND EXPLANATION (2S, 4S, etc.) .....	2
SERVICE AGREEMENT .....	3-4
SIZING TRANSFORMERS AND METERING.....	5
320 APPLICATIONS.....	6
12S APPLICATIONS.....	7
1Ø AND 3Ø DISPLAY GUIDES .....	8-9
TEMPORARY SERVICES .....	10
METER SOCKETS	
KEY ITEMS .....	11
METER SOCKET INSTALLATION AND PLACEMENT REQUIREMENTS .....	12-15
HEAT PLUS METERING (includes generator installation) .....	16
APPROVED LIST OF METER SOCKETS.....	17
GREEN SHEET .....	18
CT CABINETS	
KEY ITEMS .....	19
ALLOWED CT APPLICATIONS .....	20
APPROVED LIST OF CT CABINETS .....	21-24
CT CABINET WITH 400 AMP SOCKET MOUNTED .....	25-26
PRIMARY BAR KITS .....	27-30
CURRENT TRANSFORMERS	
PURPOSE AND EXPLANATION .....	31-33
CT SPECIFICATIONS .....	34-37
TSTM (Two Sockets Two Meters) VT PACK AND WIRING HARNESS .....	38-40
AC POWER - COLOR CODES.....	41-42
CALCULATIONS, FORMULAS AND DEFINITONS .....	43-46
RATES .....	47-48

## Classes of Service

120/240 volt, single phase, three wire (Limited to max 167 KVA transformer or 696 Amps)  
 120/208 volt, three phase, four wire wye  
 277/480 volt, three phase, four wire wye (Limited to min 300 KVA transformer or 361 Amps)

ALL 277/480 volt services will be CT/VT metered with a CT cabinet

**\*\*\*120 volt services are not allowed\*\*\***

## Service Types and Meter Forms

Service Type	Form	Label Color	Ø	Wire	Voltage	Class	Service Amps	Socket Terminals	Other
Single Phase	2S	white	1	3	120/240	200	200	4	Remote Disconnect
Single Phase >200	2S (320)	red	1	3	120/240	320	>200	4	NO Remote Disconnect, for services larger than 200 Amp
Single Phase (CT Cabinet)	4S	yellow	1	4	120/240	20	>400	6	CT Metered, Billing Multiplier, No Remote Disconnect
Three Phase (CT Cabinet)	9S	blue	3	3	120/208/480	20	>400	13	CT Metered, Billing Multiplier, No Remote Disconnect
Network Single Phase	12S	green	1	3	120/208	200	200	5	Remote Disconnect, Feed by 2 Phases of a 120/208
Three Phase	16S	yellow	3	4	120/208	200	200	7	NO Remote Disconnect
Three Phase >200	16S (320)	red	3	4	120/208	320	>200	7	NO Remote Disconnect, for services larger than 200 Amp

(no longer offered)	1S	white	1	2	120	100	100	4	Remote Disconnect
(no longer offered)	3S	blue	1	3	120/240	20	>400	5	CT Metered, Billing Multiplier, No Remote Disconnect

Any upgrades to existing 3S applications must be investigated to see if CT metering is allowed. If so, it must be converted to 4S or self-contained metering.

## Meter Forms

The form number on an electric meter is the number that helps meter techs determine what type of meter should go in a particular service. There are a variety of form numbers that are used. The two types of services that metering installation are self-contained and transformer-rated. The difference between the two is the transformer-rated service use CT's, whereas the self-contained service does not. Blondel's Theorem is typically used to determine what type of meter to install in each different type of service. The theorem is the result of his attempt to simplify both the measurement of electrical energy and the validation of such measurements. The theorem states that the power provided to a system of N conductors is equal to the algebraic sum of the power measured by N watt-meters. The N watt-meters are separately connected such that each one measures the current level in one of the N conductors and the potential level between that conductor and a common point. In a further simplification, if that common point is located on one of the conductors, that conductor's meter can be removed and only N-1 meters are required.

Form 2S - The most common meter form out there. This meter is most commonly used in a 240v, single phase three wire service. This is the meter that most people will find on their homes. This form is also used for many small businesses as well.

Form 4S - Form 4S meters are used for single phase three wire services with two CT's. This is a transformer-rated meter that would be used when the service is too large to put in a form 2S meter.

Form 9S - The form 9S is most commonly used in a 4 wire wye service. This meter is also used in a 4 wire delta service, also known as a wild-leg service.

Form 12S - Form 12S meters are self-contained meters that can be used on a few different services. They can be used on a single phase services that are pulled off of a three phase transformer. As an example, if you had a 120/208 4 wire wye transformer feeding a building and a member only wanted single phase, you could pull two legs and the neutral off the transformer to get the single phase. This is also known as a network service. **A common mistake is installing a 2S in this application which will only register 75% of the kWh.**

Form 16S - Form 16S meters are self-contained meters that are most commonly used to meter 4 wire wye services.



**Linn County  
Rural Electric  
Cooperative**

Linn County REC  
Attn: Employee Name  
5695 REC Dr  
Marion, IA 52302

March 8, 2021

Company Name  
Attention: Employee Name  
email: example@gmail.com  
Work Order Number: 2021xxxx

Reference: example - new electric service to serve a vehicle and storage building for Linn County REC at name, address

Dear Company Employee Name,

The enclosed drawing shows Linn County REC's proposal for providing electrical service at the above location.

Your charge for this installation is \$ 0,000.00.

If this proposal is acceptable this proposal must be signed and returned to Linn County REC within 60 days of the date shown above or the proposal will be voided.

Changes to the installation after signing and returning this agreement may void this agreement and/or require a new agreement

If Linn County REC construction has not commenced within 12 months from the date listed above it will be voided.

Payment must be received a minimum of 2 weeks prior to construction start.

This proposal is based on the following terms:

Linn County REC Proposes To:

1. Furnish and install wire and equipment to provide electrical service.
2. Furnish and install an applicable electric meter in the member provided meter socket. Socket must meet Linn County REC requirements as stated in the Guide to Metering.

The Applicant Agrees To:

1. Be responsible for all restoration of the site after Linn County REC completes the installation.
2. Provide without cost to the Linn County REC such easements as are necessary for the

installation and maintenance of Linn County REC's facilities on private property. If a 3<sup>rd</sup> party easement is required any cost associated in obtaining the easement will be paid by the applicant.

3. Grade the service route 15 feet wide to within six inches of final grade and clear the route of any construction materials, obstructions, trees, stumps, etc. Extra costs for additional excavation beyond normal trenching operations, due to unforeseen underground obstructions, shall be paid by the applicant.
4. Locate all private underground facilities including but not limited to storm and sanitary sewer lines, septic lines, underground electric cable, communication cable, irrigation systems, tiles, sump pump pipes, dog fences, private fiber optic, drainpipes, LP lines, private fuel lines, and private water and well lines that are not located by members of One Call. Linn County REC assumes no liability for private facilities that are not located.
5. Be responsible for complying with all aspects of compliance as required by any local, state, or federal permit or plan associated with storm water pollution prevention or erosion control. It is specifically understood and agreed that Linn County REC is providing the service requested by the Applicant solely for the Applicant. Linn County REC will not become or agree to become a co-permittee or operator for the purpose of applicants' compliance with any local, state or federal permit or plan associated with storm water pollution prevention or erosion control.
6. It is specifically understood and agreed Applicant must certify that all the above requirements shall be met or this Agreement shall be deemed null and void.

If Linn County REC is required to start construction of electric facilities during adverse condition season the work will be subject to an additional adverse condition construction charge.

Linn County REC installed facilities will remain the property of Linn County REC.

If this proposal is satisfactory, please sign and return one (1) copy of this letter. Linn County REC will release the work for scheduling upon the receipt of a signed proposal, site readiness, inspections, and payment of \$ 0,000.00. Please keep us advised of your plans so we may schedule our construction work at the appropriate time. If you have any questions, please call me at 319-377-1587 Ext 123.

Sincerely,  
Linn County REC

\_\_\_\_\_

Employee Name , Title

Accepted By: \_\_\_\_\_

Date: \_\_\_\_\_ Date Service Required: \_\_\_\_\_



# Linn County Rural Electric Cooperative

5695 REC Drive • PO Box 69 • Marion, IA 52302-0069 • Phone: 319-377-1587 or 1-800-332-5420 • Fax: 319-377-5875

## **New Service -Transformer Sizing and Metering**

Linn County REC requires data to determine the size of the transformer and metering necessary for service. The purpose of the data is better size service to lower costs for individual members and the membership as whole.

### **Required Data for Sizing Residential Services**

Information for residential services must include the heating and cooling type (Geothermal, Forced Gas/AC, Air-Source Heat Pump, Hybrid Heat Pump), kW of Backup Heat, water fuel heating type (gas or electric). Also include if there will be an EV (electric charging station), hot tub, heated pool, and or generation (solar).

### **Required Data for Sizing Commercial Services**

Information for commercial services must include the heating and cooling type, breaker panel schedules, redundant (backup) equipment, square footage, and 12-months of demand and energy usage data if the company/organization has a similar facility in operation. A Linn County REC 'Load Calculation Worksheet' and 'Three Phase Application' must also be completed.

### **Transformers and Meters**

The transformer and metering that Linn County REC determines to install may not be identical to the service size installed in the facility. For example, the facility size may be 3Ø, 800 amp, 120/208. With the information provided, Linn County REC may determine that a 3Ø, 150 KVA 120/208 service is sufficient, which provides up to 416 amp. Per Linn County REC's 'Guide to Metering,' this service would only allow for self-contained metering, not CT metering. Therefore, you may use a CT Cabinet as long as a self-contained 16S (320) meter socket is mounted to the cabinet and wired accordingly. Linn County REC makes every attempt to size the load as accurately as possible with the data provided to not oversize or undersize the transformer and metering. This helps reduce underloaded transformer losses and unnecessary charges to the member.

- If an installed transformer and or metering is overloaded and must be changed out to a larger unit, we will review the previous data provided along with any other current devices that may have been installed after.
- If equipment was added, making the load larger than the original, the member will be responsible for the costs associated with upgrading the equipment. In addition, the upgrade may require a licensed electrician.
- If the load is the same size as the original data provided, Linn County REC will be responsible for the cost of upgrading the transformer and metering equipment as well as the cost of an electrician, if needed.

The work to be performed will follow the same daily operations of Linn County REC. If an outage were to result, we would follow the same procedures for any other outage.

## Class 320 Metering Applications

SINGLE PHASE  
TRANSFORMER FULL LOAD CURRENT IN AMPS  
RATED LINE VOLTAGE

KVA	240
1	4.2
10	41.6
15	62.5
25	104
37.5	156
50	208
75	312
100	416
167	696

THREE PHASE  
TRANSFORMER FULL LOAD CURRENT IN AMPS  
RATED LINE VOLTAGE

KVA	208	240	480
45	125	108	54
75	208	181	90.5
150	416	360	180
300	832	722	361
500	1388	1203	601
750	2082	1804	902
1000	2776	2406	1203
1500	4164	3608	1804
2500	6940	6014	3007

\* USE 208V COLUMN TO DETERMINE CURRENT AVAILABLE AT 120V FROM NEUTRAL TO EACH LINE IN 120/208V 4 WIRE SYSTEM

\* Class 320 meters will be installed to those highlighted Transformer size is the primary factor not the size of the service panel.  
(example - a 25 KVA 1Ø transformer with a 400 Amp service panel should only have a Class 200 meter.



## 12S Applications

### 2S Socket to 12S Meter Adaptor



Allows a form 12S network meter to be installed in a standard residential form 2S meter socket. The adaptor provides a wire to attach to the neutral in the meter socket and adds a fifth jaw in the adaptor for neutral connection to the meter.

**The fifth terminal shall be installed horizontally in the nine o'clock position for proper fit.**

Model: LP-5J4B-SP4437 Neutral Connection is 18" of #12 wire

Explanation:

If you have only 208 volt loads connected to a 120/208 Network circuit with a form 2S meter, it will meter the loads correctly.

If 120 volt loads are connected to a 120/208 Network service, a form 2S meter will not meter these correctly. The 120 volt loads are measured at 75%, which is a consistent error for these loads at unity power factor.

Thus, if you consider how the 120 volt loads are measured and want to measure combined 120 and 208 volt loads connected to a 120/208 Network service to a form 2S meter, it cannot and will not meter these correctly based upon the 75% error factor.

The overall accuracy of the combined load, with this metering error, is totally dependent on the load balance between the 120 V loads and 208 V loads.

Higher 208 V loads will increase the overall accuracy. Heavier 120 V loads will decrease the overall accuracy **(with the worst case being at a 75% accuracy)**.

Note: With all three load set-ups, a slight additional error will be added on an electromechanical meter where the meter voltage coil is energized at 208 V rather than at the rated 240 V.

Single-phase meters display 10 items and have the label to the right side of the reading.

	<u>Label</u>	<u>Item Displayed</u>
1.	TA KW h	kWh On-Peak
2.	- TA KW h	- kWh On-Peak (co-gen)
3.	TC KW h	kWh Off-Peak
4.	- TC KW h	- kWh Off-Peak (co-gen)
5.	Td KW h	kWh Super Saver
6.	- Td KW h	- kWh Super Saver (co-gen)
7.	TOT KW h	kWh Total
8.	- TOT KW h	- kWh Total
9.	TOT KW	kW
10.	HOPS	# of Hops (AMI)



Reverse flow/Negative (-) readings will only be displayed for those accounts having co-generation. This is the over-production of kWh.

1. kWh TA (On-Peak 4:01 PM to 10:00 PM)



2. - kWh TA (On-Peak 4:01 PM to 10:00 PM)



3. kWh TC (Off-Peak 5:01 AM to 4:00 PM)



4. - kWh TC (Off-Peak 5:01 AM to 4:00 PM)



5. kWh Td (Super Saver 10:01 PM to 5:00 AM)



6. - kWh Td (Super Saver 10:01 PM to 5:00 AM)



7. TOT KW h (Total kWh)



8. - TOT KW h (- Total kWh)



9. TOT KW (Total kWh)



10. # of Hops (AMI Communications)



Linn County REC – HONEYWELL – Three Phase Meter Display

Three-phase meters display 7 items. The numbers 1-6 are displayed in the upper left corner and the 7th display is the segment test, which lights up all areas of the display for verification all segments are working. Due to a new rate design in April 2023 not all three phase meters will display ON or OFF PEAK. Reverse flow/Negative (-) readings will only be displayed for those accounts having co-generation. This is the over-production of kWh.

	<u>Label</u>	<u>Item Displayed</u>
1.	TOTAL KW h	+kWh (TOTAL)
2.	MAX KW	kW (15-minute Demand)
3.	Rate A KW h	+kWh (ON PEAK)
4.	Rate C KW h	+kWh (OFF PEAK)
5.	TOTAL KW h	-kWh (TOTAL GENERATION OR REVERSE kWh)
6.	HOPS	# of Hops – AMI Communications
7.	888 Segment Test	

1. +kWh (TOTAL)



2. kW (15-minute Demand)



3. +kWh (ON PEAK)



4. +kWh (OFF PEAK)



5. -kWh (TOTAL GENERATION OR REVERSE kWh)



6. # of Hops – AMI Communications



7. 888 Segment Test

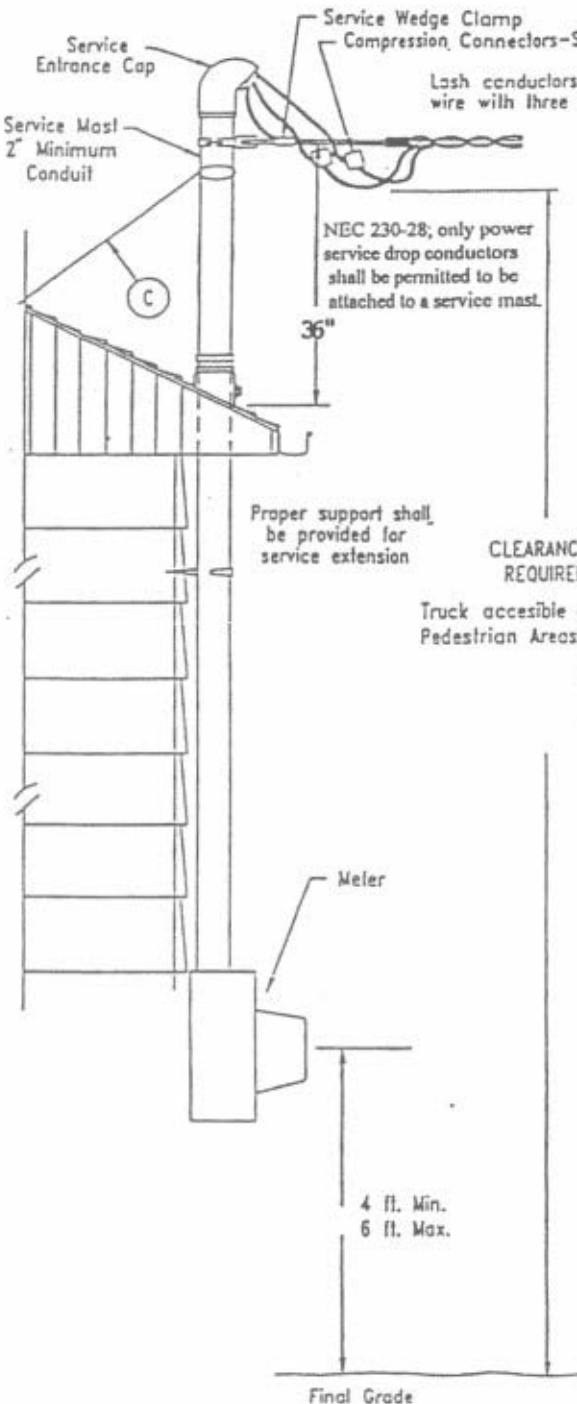


## Temporary Services

1. Single phase temporary meter loops will be provided by the members electrician for residential services.
2. Single phase commercial temporary meter loops will be provided by the members electrician and the installation of the temporary service, by Linn County REC, will be charged to the member.
3. Three phase temporary services must be fed from **permanent** three phase transformer.
4. Single phase temporary services are **NOT** allowed to be fed from a three phase transformer.
5. Temporary meter loops must be in a location not to disrupt the installation of the permanent service.
6. A temporary service will not be energized, and a meter will not be installed if it is in the path of the permanent service, until it is relocated to an approved location by Linn County REC.
7. A temporary service will not be energized, and a meter will not be installed until an approved inspection has been received.
8. See Tariff – Article 10 METERING - for additional information  
<https://www.linncountyrec.com/my-cooperative/electric-service/rates-tariffs>
9. The 'Guide to Metering' - can be found on the Linn County REC website  
<https://www.linncountyrec.com/my-cooperative/electric-service/metering>

## Meter Sockets – Key Items

1. Only meter sockets listed in this guide are acceptable by Linn County REC.
2. Equipment installed which has not been approved by Linn County REC will not be accepted, and the service will not be energized until corrected.
3. All sockets shall be inspected and approved by Linn County REC to ensure they meet our requirements.
4. Load side connections are on the bottom and line side connections are on the top in meter sockets. (this is opposite in CT cabinet connections)
5. All residential and commercial meter-sockets, including Heat Plus, shall be a ring-less type and have a **lever by-pass**.
6. For **Heat Plus** installations a 200 Amp socket w/lever by-pass must be used. Refer to Section 15 – Heat Plus Metering.
7. On loads serving mobile homes, the Mobile Home Park or the member-consumer will provide and own an approved meter pedestal with a disconnect. See examples of Milbank on Approved List of Meter Sockets.
8. On 1 $\emptyset$  feed from a 120/208, 3 $\emptyset$  transformer the meter socket must be Form 12S.
9. A 400 Amp service, excluding those fed from a 480 Volt, will not be CT metered and require a 320 Amp socket.
10. On loads serving multi-plex units, such as apartment buildings, the gang sockets will be provided by the member-consumer. They must be ringless, have a lever by-pass and if fed from a 120/208, 3 $\emptyset$  transformer it must be a Form 12S.
11. A meter will not be installed in a socket until an approved inspection has been received.
12. The meter socket is owned by the member and the maintenance of the meter socket is the members responsibility.
13. A Linn County REC meter seal will be installed on all sockets.
14. Primary Metering – See Tariff – Article 10 METERING  
<https://www.linncountyrec.com/my-cooperative/electric-service/rates-tariffs>
15. See Tariff – Article 10 METERING - for additional information  
<https://www.linncountyrec.com/my-cooperative/electric-service/rates-tariffs>
16. The ‘Guide to Metering’ - can be found on the Linn County REC website  
<https://www.linncountyrec.com/my-cooperative/electric-service/metering>



Service Wedge Clamp  
 Compression Connectors-Service Linklet  
 Lash conductors to neutral messenger  
 wire with three layers of laps.

NEC 230-28; only power  
 service drop conductors  
 shall be permitted to be  
 attached to a service mast.

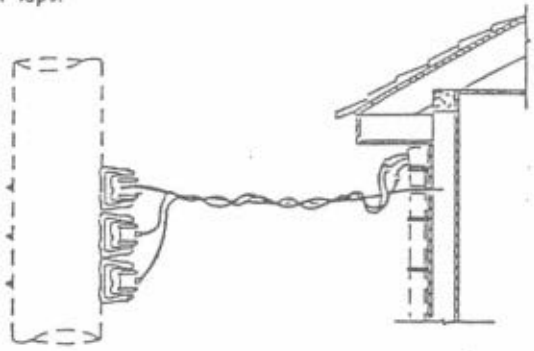
Proper support shall  
 be provided for  
 service extension

CLEARANCES  
 REQUIRED

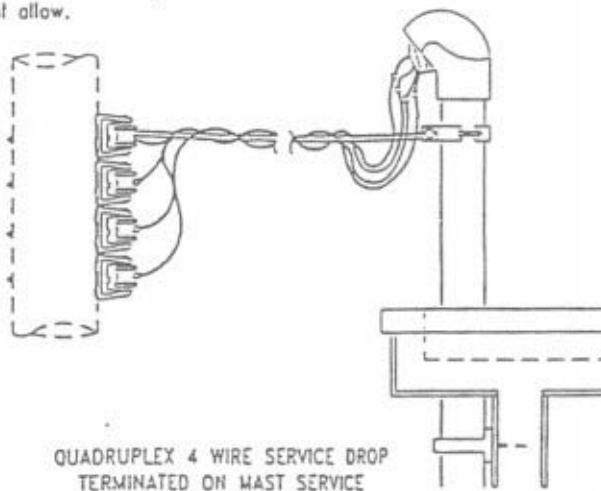
Truck accessible areas - 16-1/2'  
 Pedestrian Areas: 12-1/2' standard min.  
 Exception: 10-1/2' Min.  
 if attachment height does  
 not allow.

Meter  
 4 ft. Min.  
 6 ft. Max.

Final Grade



TRIPLEX 3 WIRE SERVICE DROP  
 TERMINATED ON HOUSE KNOBS



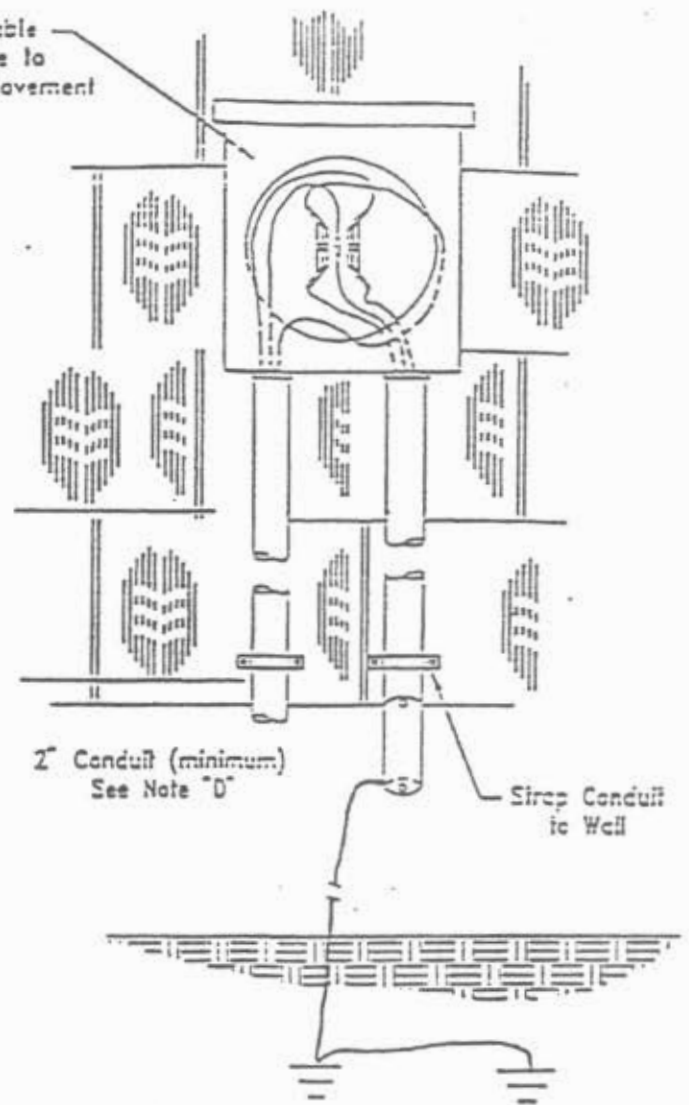
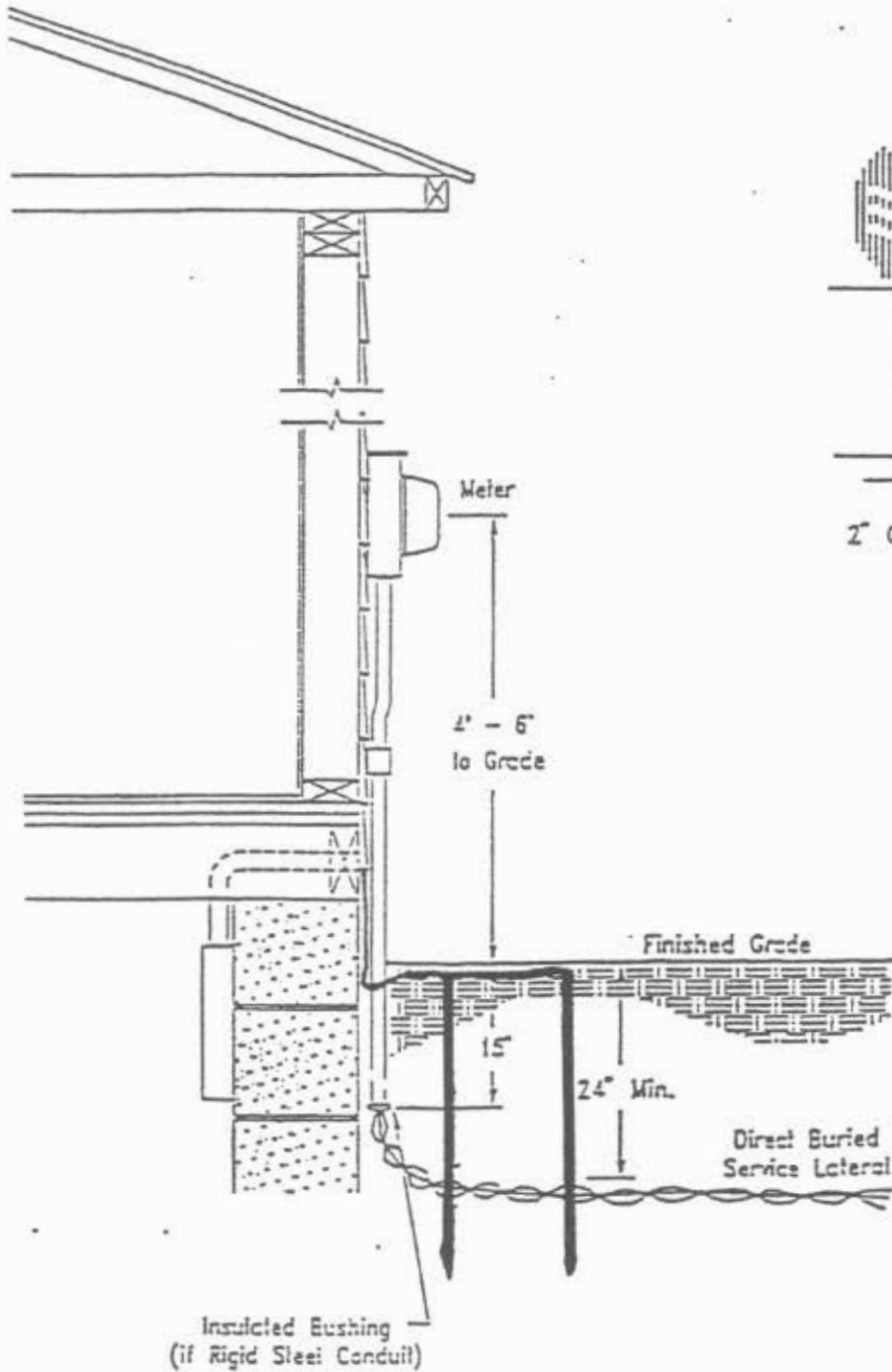
QUADRUPLEX 4 WIRE SERVICE DROP  
 TERMINATED ON MAST SERVICE

Notes:

- A. Where the service drop extends more than 6' across roof, increase service clearance to 36".
- B. Outer service wire connectors must be installed and sealed to equal insulation of line wire. Do not cover neutral connector.
- C. Service masts over 3' in height must be guyed to house by others.

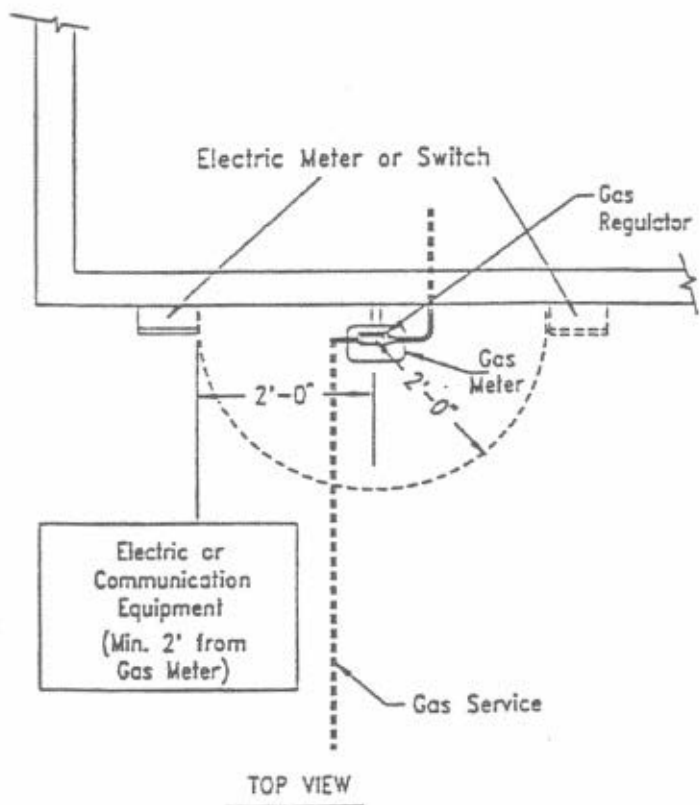
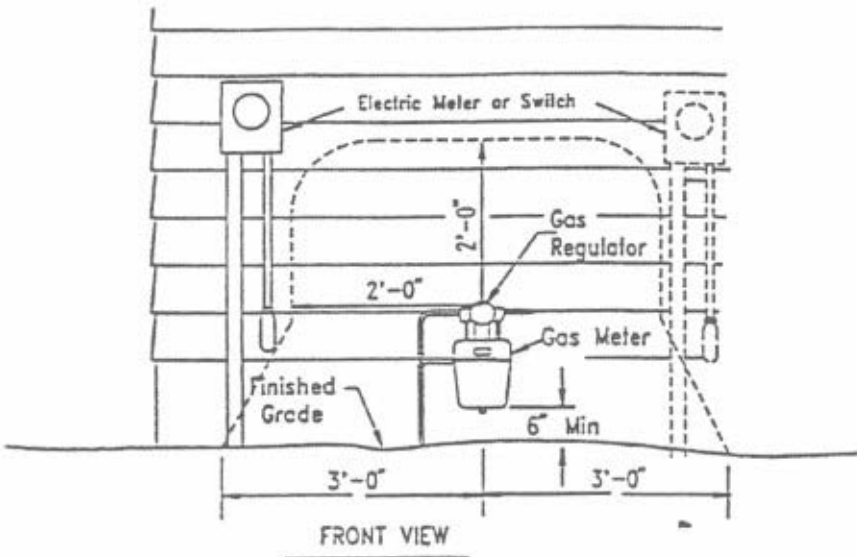
MULTIPLEX SERVICE DROP

Provide Ample Slack in Cable  
to Prevent Possible Damage to  
Meter Insulation from Cable Movement



NOTE: Longer Rods or Multiple Rods may be used to reduce the ground resistance. Spacing between multiple rods should be not less than 6'. A minimum of (2) rods are required. Driven depth shall be not less than 8'. The upper end shall be flush with or below the ground level unless suitably protected.

### UNDERGROUND RESIDENTIAL METER INSTALLATION



Note:

2'-0" Clearance in any Direction Between Electric Meter Box and Gas Meter regulator except 3'-0" radius in any direction at ground level.

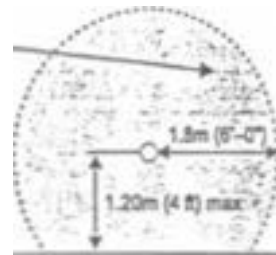
MINIMUM CLEARANCES for OUTSIDE ELECTRIC and GAS METER INSTALLATIONS



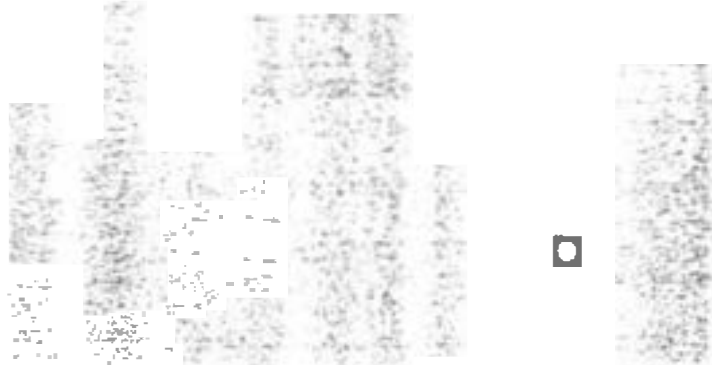
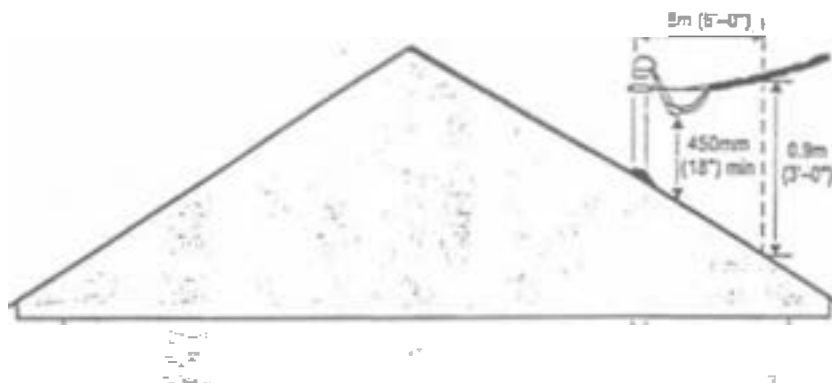
Maintain not less than 0.90m (3'-0") vertical clearance above roof outside of 1.80m (6'-0") radius from the service mast.



Maintain not less than 450mm (18") vertical clearance above roof *within* 1.80m (6'-0") radius from the service mast.



Plan View



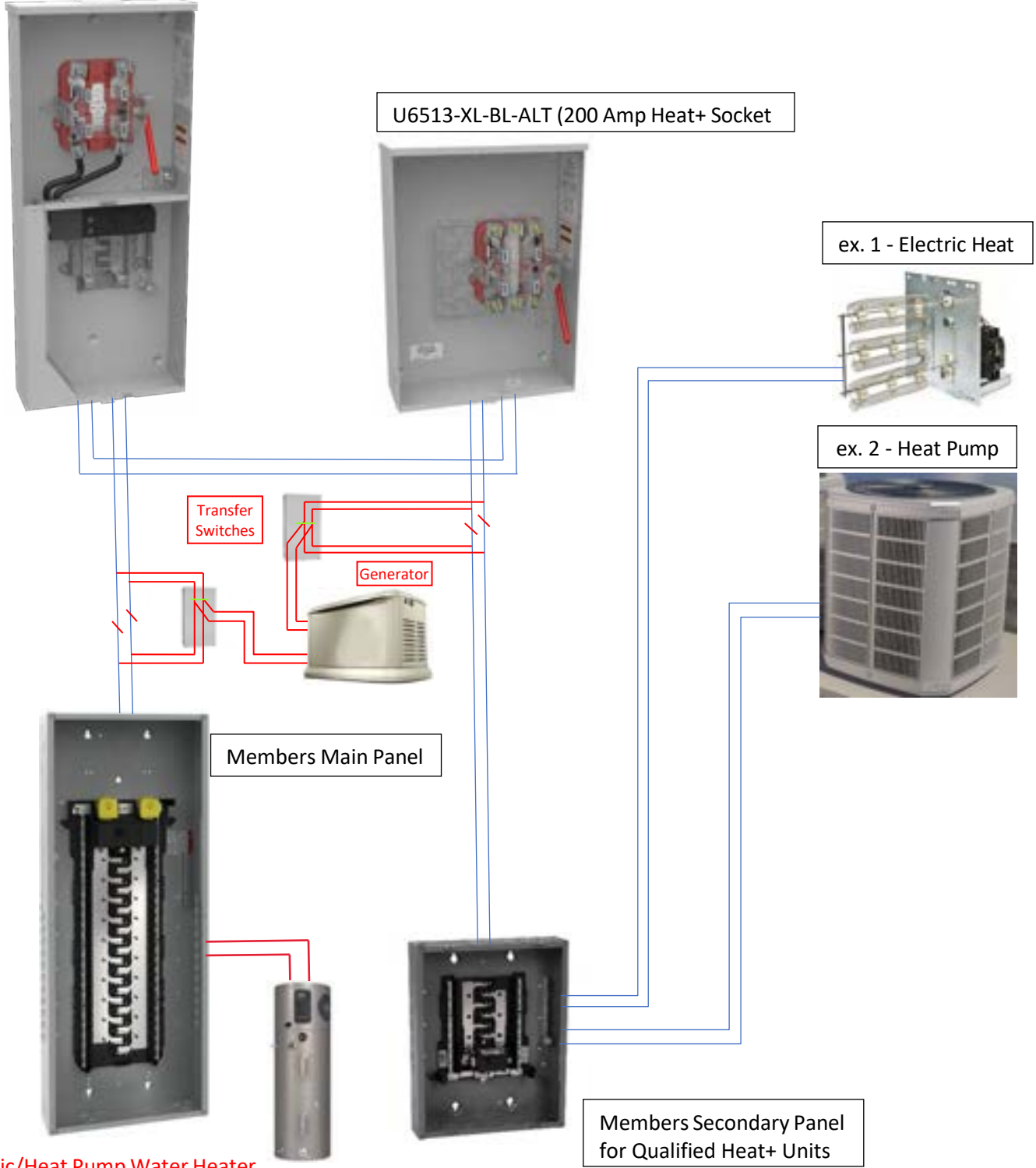
Elevation View

**Fig 234-2**  
Clearances of Service Drop Terminating on Support Mast

# Heat Plus Wiring

ex. U5871-XL-200 (Single Phase w/ 200 Amp Main and 8 Circuits) or U5059-X-2/200-K3L (Single Phase 320 w/ 2 - 200 Amp Mains)

**THE HEAT+ METER SOCKET MUST BE FED FROM THE GENERAL USE METER SOCKET. (THIS IS A SUBTRACTIVE RATE)**



\*Electric/Heat Pump Water Heater Must be in Main Panel

All wiring must meet current NES Code and Electrical Inspections

## Approved List of Meter Sockets

Service Type (Residential & Commercial)	Service Amps	Terminals	Form	VAC	Socket Amps	Voltage	Bypass	Cable Entry	UL Listed	Mfg.	Catalog Number
Mobile Home Park Ped (1 Service)	100/200	4	2S	240	200	120/240	Lever	URD	yes	Milbank	U5701-O-200S
										Milbank	U6221-O-200-10GR
Mobile Home Park Ped (2 Services)	100/200	4	2S	240	200	120/240	Lever	URD	yes	Milbank	U5702-O-200S
Single Phase (including Heat Plus)	100/200	4	2S	600	200	120/240	Lever	OH or URD	yes	Milbank	U6513-XL-BL-ALT
								URD		Milbank	U4721-O-BL-ALT
Single Phase w/ Main(s) and Spaces	200	4	2S	240	200	120/240	Lever	OH or URD	yes	Milbank	U5871-XL-200
										Milbank	U6281-XL-200
										Leviton	LS820-BLD
										Siemens	MC0816B1200JLT
Single Phase w/ 200 Amp Main	200	4	2S	240	200	120/240	Lever	OH or URD	yes	Ronk	MSB200LC-UG
****Single Phase 320	>200	4	2S (320)	600	320	120/240	Lever	OH or URD	yes	Milbank	U2448-X
										Siemens	48004-82
Single Phase 320 w/ Main(s) and Spaces	>200	4	2S (320)	600	320	120/240	Lever	OH or URD	yes	Milbank	U6585-X-2-200-5T9
					320					Milbank	U5059-X-2/200-K3L
					300					Leviton	LS130-S5D
					400					Leviton	LS140-S5D
					320					Ronk	MSB320L
					320					Square D	QU816D400SL
**Single Phase (CT Cabinet Required)	>400	6	4S	600	20	120/240	Test Sw.	OH or URD	yes	Milbank	UC7478-RL-361
Three Phase	200	7	16S	600	200	120/208/240	Lever	OH or URD	yes	Milbank	U9701-RXL
								URD		Milbank	U8606-RXL-CECHA
								Milbank		U4910-O-BL-ALT	
****Three Phase 320	>200	7	16S (320)	600	320	120/208/240	Lever	OH or URD	yes	Milbank	U4911-X-QG-BL-AMS
										Milbank	U2594-X-K7-ALT
										EATON	1008543CH
										Siemens	48707-02
**Three Phase (CT Cabinet Required)	>400	13	9S	600	20	120/208/240	Test Sw.	OH or URD	yes	Milbank	UC7445-XL-2031

\*\* Provided by Linn County REC (included with the 1Ø and 3Ø CT Metering Packages on the Green Sheet section 14.

\*\*\*\* See page 17 - Allowed CT Applications for Connector Kits

For unique applications not listed contact Linn County REC for socket approval.

MAP LOCATION		Work Order	
Billing Name			
Billing Address			
Billing City			
Billing State		SERVICE ADDRESS	
Billing Zip		Comments	

LCREC Item #	Materials (tax)	Credit 415.1	Qty	Amount	Labor	
					Marion 2	NLOP 25
59102510	1Ø Standard URD/OH Socket (includes Heat+)	2S U6513		\$275.00	\$0.00	\$0.00
94570201	1Ø w/200 Amp Main and 8 Circuits	2S U5871		\$590.00	\$0.00	\$0.00
59102848	1Ø Class 320 meter socket	2S U2448		\$475.00	\$0.00	\$0.00
94570320	1Ø Class 320 w/2 - 200 Amp Mains	2S U5059		\$990.00	\$0.00	\$0.00
59101932	1Ø CT 7-Term Socket (includes CT's & Bar Kit)	4S UC7478		\$1,175.00	\$0.00	\$0.00
59102640	3Ø Standard URD/OH Socket	16S U9701		\$350.00	\$0.00	\$0.00
59101270	3Ø CT 13-Term <b>208/240</b> (includes CT's & Bars)	9S UC7445		\$1,715.00	\$0.00	\$0.00
59101270	3Ø CT 13- Term <b>480</b> (includes CT's, VT & Bars)	9S UC7445		\$2,400.00	\$0.00	\$0.00
44401220	Secondary Pedestal	PRMC-150		\$210.00	\$0.00	\$0.00
				\$		\$0.00

LCREC Item #	Materials/labor with work order (NO TAX)	Credit 107.2	Qty	Amount		
39071832	Pole, Metal Satin Aluminum			\$780.00	\$	-
39073180	Pole, Galvanized 35' w/8'arm			\$1,745.00	\$	-
39071831	Pole, Metal Black Aluminum			\$1,130.00	\$	-
48063005	Pole, Wood, 30' class 5			\$330.00	\$	-
48063505	Pole, Wood, 35' class 5			\$385.00	\$	-
39002510	Arm, Light 2'			\$32.00	\$	-
39080832	Arm, Light 8'			\$250.00	\$	-
39081232	Arm, Light 12'			\$400.00	\$	-
39062213	Light - LED Black Carriage			\$460.00	\$	-
39062214	Light - LED Grey Round Top			\$515.00	\$	-
	Pole install charge			\$350.00	\$	-
	Additional Pole install charge			\$100.00	\$	-
	Pole attachment fee			\$125.00	\$	-
CIAC					\$	-
					\$	-
					\$	-
				\$		\$0.00

OH materials/labor - no work order (no tax)	Credit 583	Qty	Cost	Total
Installation costs, service orders				\$0.00

UG materials/labor - no work order (no tax)	Credit 584	Qty	Cost	Total
Installation costs, service orders				\$0.00

LCREC Item #	Special Credit 415.1	Qty	Amount	
58600200	Meter Treater Primary Surge Suppressor (tax)		\$135.00	\$0.00
	Labor: Installation of Meter Treater (credit 583)		\$75.00	\$0.00
				\$0.00

TAXES			
State	6% credit	237.00	\$0.00
Option	1% credit	237.02	\$0.00
<b>Total Tax Amount</b>			<b>\$0.00</b>
<b>TOTAL</b>			<b>\$0.00</b>

rev. 1/9/25 \*\*\*Current pricing is kept in the MR part of NISC.\*\*\*  
S:\Metering Department (S Drive)\Green Sheets

## CT Cabinets – Key Items

1. Only CT cabinets listed in this guide are acceptable by Linn County REC and will be provided by the member.
2. 1Ø and 3Ø services 400 Amp or less must be self-contained metering. CT metering will not be allowed.
3. Equipment installed which has not been approved by Linn County REC will not be accepted, and the service will not be energized until corrected.
4. CT cabinets shall be inspected and approved by Linn County REC to ensure they meet our requirements. Those listed are already approved.
5. Load side connections are on the top and line side connections are on the bottom in CT Cabinets. (this is opposite in Meter Socket connections)
6. All cabinets shall carry a NEMA 3R rating.
7. The location of the CT cabinet is recommended to be on the same pad as the transformer for 3Ø applications.
8. All CT cabinets will be within 100' of the transformer at a location agreed upon between Linn County REC and the members electrician.
9. CT's and Primary Bar Kits will be provided and installed by Linn County REC and charged to the member.
10. A Linn County REC padlock will be installed on all CT Cabinets.
11. See Tariff – Article 10 METERING - for additional information  
<https://www.linncountyrec.com/my-cooperative/electric-service/rates-tariffs>
12. The 'Guide to Metering' - can be found on the Linn County REC website  
<https://www.linncountyrec.com/my-cooperative/electric-service/metering>

## CT Metering Allowed Applications

SINGLE PHASE  
TRANSFORMER FULL LOAD CURRENT IN AMPS  
RATED LINE VOLTAGE

KVA	240
1	4.2
10	41.6
15	62.5
25	104
37.5	156
50	208
75	312
100	416
167	696

THREE PHASE  
TRANSFORMER FULL LOAD CURRENT IN AMPS  
RATED LINE VOLTAGE

KVA	208	240	480
45	125	108	not allowed
75	208	181	not allowed
150	416	360	not allowed
300	832	722	361
500	1388	1203	601
750	2082	1804	902
1000	2776	2406	1203
1500	4164	3608	1804
2500	6940	6014	3007

Connector Kits | For Use with 3/8"-  
16 Stud Type Units Only



Twin		
Suffix	Part #	(3 per set) - 1Ø
K2	K1350	#6-350
K2L	K1350L	#6-350 (non rotating)
K4	K1541	#4-600
Suffix	Part #	(4 per set) - 3Ø
K6	K3442	#6-350
K8	K3083	#4-600

\*USE 208V COLUMN TO DETERMINE CURRENT AVAILABLE AT 120V FROM NEUTRAL TO EACH LINE IN 120/208V 4 WIRE SYSTEM

\*CT metering will be allowed for those highlighted

### Linn County REC Approved List of CT Cabinets for 1Ø 250V

Service Type (Residential & Commercial)	Service Amps	Mount (wall or pad)	Cable Entry			Amps	Voltage	Phase	Dimensions			Manufacturer	Catalog Number	Local Distributors
			Top In / Bottom Out	Bottom In/Out	Bottom In / Top Out				H"	W"	D"			
Single Phase 250V	600	Wall			X	600	250	1	48	25	15	Milbank	ALIM-613	Crescent, Terry-Durin
		Wall		X		600	250	1	48	36	15	Milbank	ALIM-613UGBX	Crescent, Terry-Durin
		Wall	X	X	X	600	250	1	48	36	16	AMP	ALICT6-3B	3E
		Wall		X	X	600	250	1	48	36	15	Galva-Closure	ALI-613UGBX	Van Meter
600	Pad		X		600	250	1	58	25	15	Milbank	ALIM-613PM	Crescent, Terry-Durin	
	Pad	X	X	X	600	250	1	60	36	15	AMP	ALIPCT6-3	3E	
	Pad		X	X	600	250	1	58	36	15	Galva-Closure	ALI-613PM	Van Meter	

\*\*\*This is the only single phase application that CT Metering is allowed including no single phase 600V applications\*\*\*

### Linn County REC Approved List of CT Cabinets for 3Ø 250V

Service Type (Residential & Commercial)	Service Amps	Mount (wall or pad)	Cable Entry			Amps	Voltage	Phase	Dimensions			Manufacturer	Catalog Number	Local Distributor
			Top In / Bottom Out	Bottom In/Out	Bottom In / Top Out				H"	W"	D"			
Three Phase 250V	600	Wall			X	600	250	3	48	25	15	Milbank	ALIM-634	Crescent, Terry-Durin
		Wall		X		600	250	3	48	36	15	Milbank	ALIM-634UGBX	Crescent, Terry-Durin
		Wall	X	X	X	600	250	3	48	36	15	AMP	ALICT6-4B	3E
		Wall		X	X	600	250	3	48	36	15	Galva-Closure	ALI-634UGBX	Van Meter
600	Pad		X		600	250	3	58	36	15	Milbank	ALI-634PM	Crescent, Terry-Durin	
	Pad	X	X	X	600	250	3	60	36	15	AMP	ALIPCT6-4	3E	
	Pad		X	X	600	250	3	58	36	15	Galva-Closure	ALI-634PM	Van Meter	
800	800	Wall			X	800	250	3	48	25	15	Milbank	ALIM-834	Crescent, Terry-Durin
		Wall		X		800	250	3	48	36	15	Milbank	ALIM-834UGBX	Crescent, Terry-Durin
		Wall	X	X	X	800	250	3	48	36	15	AMP	ALICT8-4B	3E
		Wall		X	X	800	250	3	48	36	15	Galva-Closure	ALI-834UGBX	Van Meter
800	800	Pad		X		800	250	3	58	36	15	Milbank	ALIM-834PM	Crescent, Terry-Durin
		Pad	X	X	X	800	250	3	60	36	15	AMP	ALIPCT8-4	3E
		Pad		X	X	800	250	3	58	36	15	Galva-Closure	ALI-834PM	Van Meter

\*\*\*1200 Amp and greater applications will NOT be Wall Mounted\*\*\*

### Linn County REC Approved List of CT Cabinets for 3Ø 250V

Service Type (Residential & Commercial)	Service Amps	Mount (wall or pad)	Cable Entry			Amps	Voltage	Phase	Dimensions			Manufacturer	Catalog Number	Local Distributor
			Top In / Bottom Out	Bottom In/Out	Bottom In / Top Out				H"	W"	D"			
<b>Three Phase 250V</b>	<b>1200</b>	Pad		X		1200	250	3	64	45	15	Milbank	ALIM-1234PM	Crescent, Terry-Durin
		Pad	X	X	X	1200	250	3	60	48	15	AMP	ALIPCT12-4	3E
		Pad		X	X	1200	250	3	64	46	15	Galva-Closure	ALI-1234PM	Van Meter
<b>1600</b>		Pad		X		1600	250	3	66	54	15	Milbank	ALIM-1634PM	Crescent, Terry-Durin
		Pad	X	X	X	1600	250	3	72	54	21	AMP	ALIPCT16-4	3E
		Pad		X	X	1600	250	3	72	54	15	Galva-Closure	ALI-1634PM	Van Meter
<b>2000</b>		Pad		X		2000	250	3	66	54	15	Milbank	ALIM-2034PM	Crescent, Terry-Durin
		Pad	X	X	X	2000	250	3	72	54	21	AMP	ALIPCT20-4	3E
		Pad		X	X	2000	250	3	72	54	15	Galva-Closure	ALI-2034PM	Van Meter
<b>2500</b>		Pad		X		2500	250	3	72	50	21	Milbank	ALIM-2534PM	Crescent, Terry-Durin
		Pad	X	X	X	2500	250	3	72	54	21	AMP	ALIPCT25-4	3E
		Pad		X	X	2500	250	3	72	50	21	Galva-Closure	ALI-2534PM	Van Meter
<b>3000</b>		Pad		X		3000	250	3	72	50	21	Milbank	ALIM-3034PM	Crescent, Terry-Durin
		Pad	X	X	X	3000	250	3	72	54	21	AMP	ALIPCT30-4	3E
		Pad		X	X	3000	250	3	72	15	21	Galva-Closure	ALI-3034PM	Van Meter

For unique applications not listed contact Linn County REC for cabinet approval

Continued on next page



### Linn County REC Approved List of CT Cabinets for 3Ø 600V

Service Type (Residential & Commercial)	Service Amps	Mount (wall or pad)	Cable Entry			Amps	Voltage	Phase	Dimensions			Manufacturer	Catalog Number	Local Distributors
			Top In / Bottom Out	Bottom In/Out	Bottom In / Top Out				H"	W"	D"			
Three Phase 600V	400	Wall			X	400	600	3	48	36	15	Milbank	ALIM-464	Crescent, Terry-Durin
		Wall		X		400	600	3	48	36	15	Milbank	ALIM-464UGBX	Crescent, Terry-Durin
		Wall	X	X	X	400	600	3	60	36	15	AMP	ALICT4-4PT	3E
		Wall		X	X	400	600	3	48	36	15	Galva-Closure	ALI-464UGBX	Van Meter
	400	Pad		X		400	600	3	58	36	15	Milbank	ALIM-464PM	Crescent, Terry-Durin
		Pad		X		400	600	3	60	36	15	AMP	ALIPCT4-4PT	3E
		Pad		X	X	400	600	3	58	36	15	Galva-Closure	ALI-464PM	Van Meter
	600	Wall			X	600	600	3	48	36	15	Milbank	ALIM-664	Crescent, Terry-Durin
		Wall		X		600	600	3	48	36	15	Milbank	ALIM-664UGBX	Crescent, Terry-Durin
		Wall	X	X	X	600	600	3	48	36	15	AMP	ALICT6-4PT	3E
		Wall		X	X	600	600	3	48	36	15	Galva-Closure	ALI-664UGBX	Van Meter
	600	Pad		X		600	600	3	58	36	15	Milbank	ALIM-664PM	Crescent, Terry-Durin
Pad			X		600	600	3	60	36	15	AMP	ALIPCT6-4PT	3E	
Pad			X	X	600	600	3	58	36	15	Galva-Closure	ALI-664PM	Van Meter	
800	Wall			X	800	600	3	48	36	15	Milbank	ALIM-864	Crescent, Terry-Durin	
	Wall		X		800	600	3	48	36	15	Milbank	ALIM864UGBX	Crescent, Terry-Durin	
	Wall	X	X	X	800	600	3	48	36	15	AMP	ALICT8-4PT	3E	
	Wall		X	X	800	600	3	48	36	15	Galva-Closure	ALI-864UGBX	Van Meter	
800	Pad		X		800	600	3	58	36	15	Milbank	ALIM-864PM	Crescent, Terry-Durin	
	Pad		X		800	600	3	60	36	15	AMP	ALIPCT8-4PT	3E	
	Pad		X	X	800	600	3	58	36	15	Galva-Closure	ALI-864PM	Van Meter	

\*\*\*1200 Amp and greater applications will NOT be Wall Mounted\*\*\*

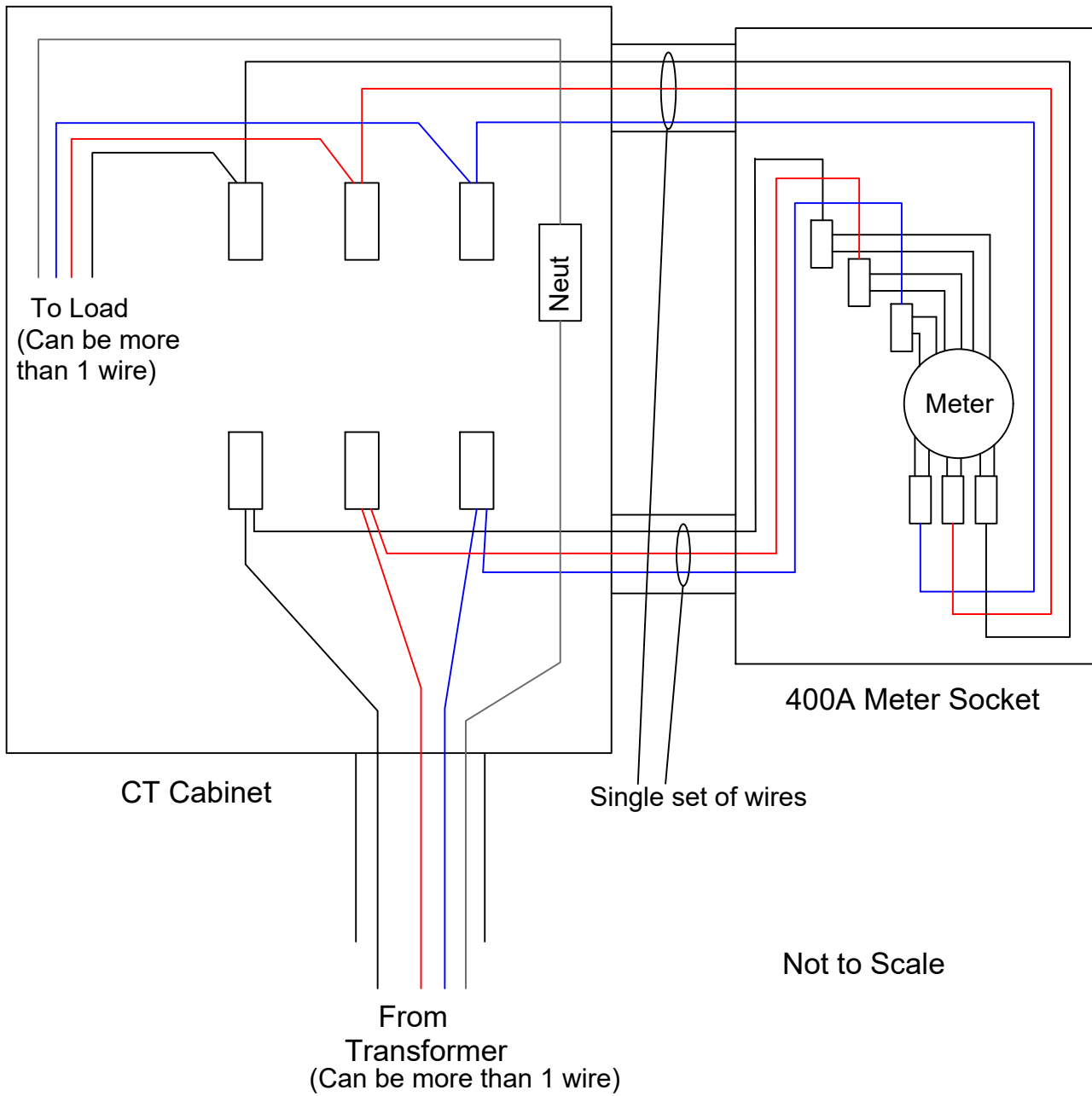
For unique applications not listed contact Linn County REC for cabinet approval

Continued on next page

### Linn County REC Approved List of CT Cabinets for 3Ø 600V

Service Type (Residential & Commercial)	Service Amps	Mount (wall or pad)	Cable Entry			Amps	Voltage	Phase	Dimensions			Manufacturer	Catalog Number	Local Distributor
			Top In / Bottom Out	Bottom In/Out	Bottom In / Top Out				H"	W"	D"			
<b>Three Phase 600V</b>	<b>1200</b>	Pad		X		1200	600	3	58	54	15	Milbank	ALIM-1264PM	Crescent, Terry-Durin
		Pad		X		1200	600	3	60	48	15	AMP	ALIPCT12-4PT	3E
		Pad		X	X	1200	600	3	58	54	15	Galva-Closure	ALI-1264PM	Van Meter
	<b>1600</b>	Pad		X		1600	600	3	66	60	15	Milbank	ALIM-1664PM	Crescent, Terry-Durin
		Pad		X		1600	600	3	72	54	21	AMP	ALIPCT16-4PT	3E
		Pad		X	X	1600	600	3	72	60	15	Galva-Closure	ALI-1664PM	Van Meter
	<b>2000</b>	Pad		X		2000	600	3	66	60	15	Milbank	ALIM-2064PM	Crescent, Terry-Durin
		Pad		X		2000	600	3	72	54	21	AMP	ALIPCT20-4PT	3E
		Pad		X	X	2000	600	3	72	60	15	Galva-Closure	ALI-2064PM	Van Meter
	<b>2500</b>	Pad		X		2500	600	3	72	60	21	Milbank	ALIM-2564PM	Crescent, Terry-Durin
		Pad		X		2500	600	3	72	54	21	AMP	ALIPCT25-4PT	3E
		Pad		X	X	2500	600	3	72	60	21	Galva-Closure	ALI-2564PM	Van Meter
	<b>3000</b>	Pad		X		3000	600	3	72	60	21	Milbank	ALIM-3064PM	Crescent, Terry-Durin
		Pad		X		3000	600	3	72	54	21	AMP	ALIPCT30-4PT	3E
		Pad		X	X	3000	600	3	72	60	21	Galva-Closure	ALI-3064PM	Van Meter

For unique applications not listed contact Linn County REC for cabinet approval



**Linn County REC**

5695 REC Drive  
Marion, IA 52302

Not to Scale

Drawing: **CT Cabinet w/400A Socket**

Drawn By: KS

Date: 10/5/2023

Revision History

Date:

By:



4

3

2

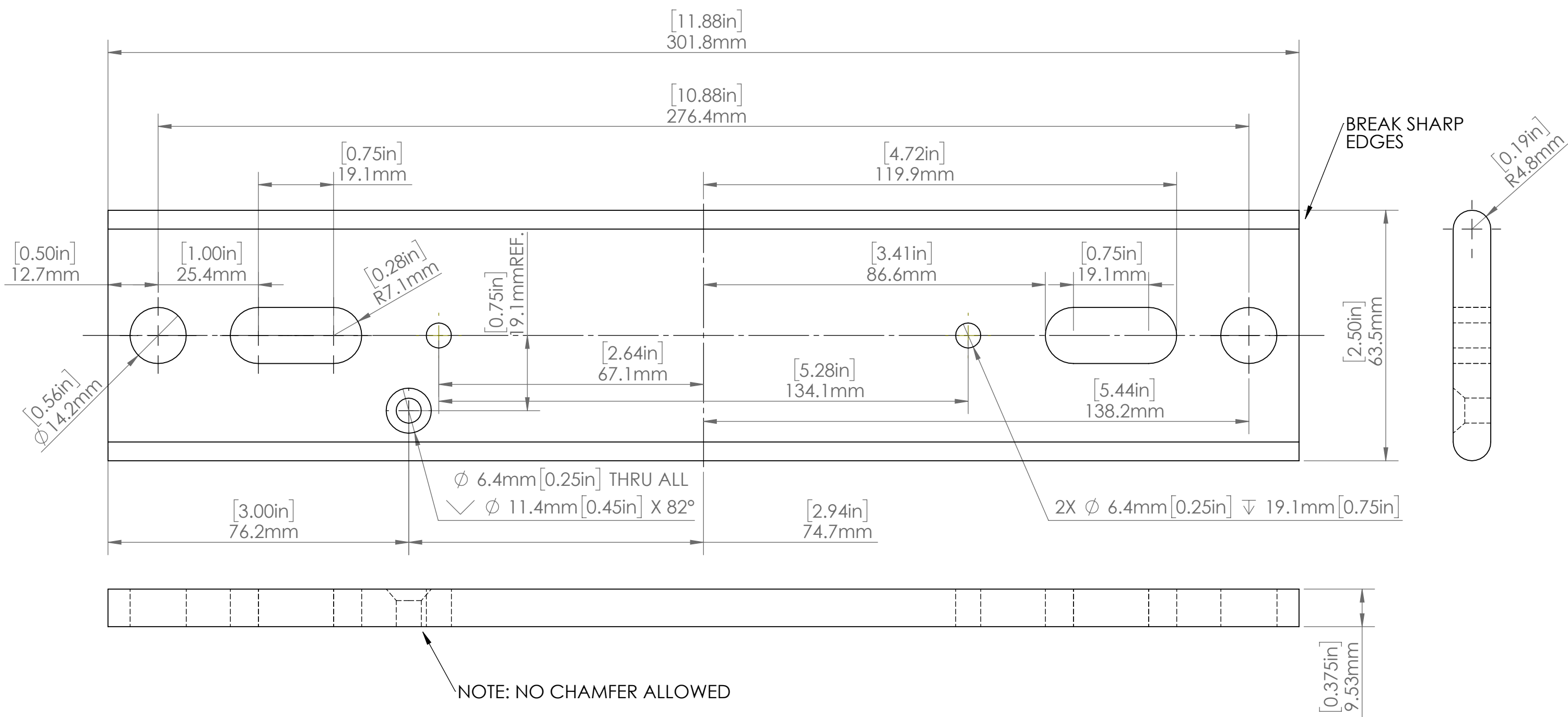
1

B

B

A

A



- NOTES:
1. PART NUMBER: MCR-080-1045-001
  2. MATTE TIN PLATING
  3. FREE OF BURRS AND SHARP EDGES
  4. PUNCH HOLES ACCEPTABLE AND PUNCH NIBBLE FACING SAME SIDE AS COUNTERSINK

PROPRIETARY AND CONFIDENTIAL

CONFIDENTIAL INFORMATION: This drawing and all information associated therewith contains the proprietary and confidential information of Peak Demand Inc., and is subject to patent, trademark, copyright, or trade secret protection. This drawing, or any information associated therewith, may not be reproduced, used, or disclosed without the prior written consent of Peak Demand Inc.

Copyright 2017 Peak Demand Inc. All rights reserved.

UNLESS OTHERWISE SPECIFIED:		ECN-0620003	06/29/2020
DIMENSIONS ARE IN INCHES		ECN-05190003	05/14/19
TOLERANCES:		ECN-0820001	08/24/20
FRACTIONAL ± 1/32		ECN #	Approved Date
ANGULAR: MACH ± 1°			
TWO PLACE DECIMAL ±.032			
THREE PLACE DECIMAL ±.005			
INTERPRET GEOMETRIC TOLERANCING PER:		NAME	DATE
MATERIAL	Copper	DRAWN BY	L.Wang 10/31/18
FINISH	TIN PLATE	REVISED BY	L.Wang 08/24/20
		APPROVED BY	
DO NOT SCALE DRAWING			

**peakdemand**

DESCRIPTION:  
**COM CONDUCTOR LOW CURRENT**

SIZE	DWG. NO.	REV
<b>B</b>	MCR-080-1045	<b>P7</b>
SCALE: 1:1	WEIGHT:	SHEET 1 OF 2

4

3

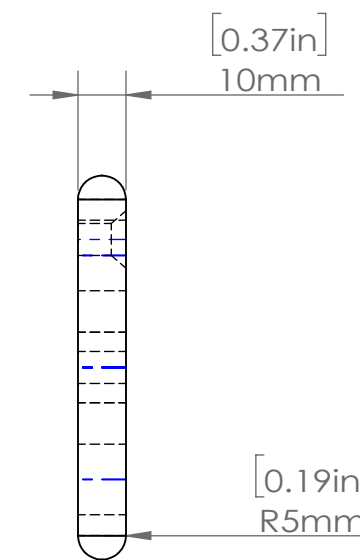
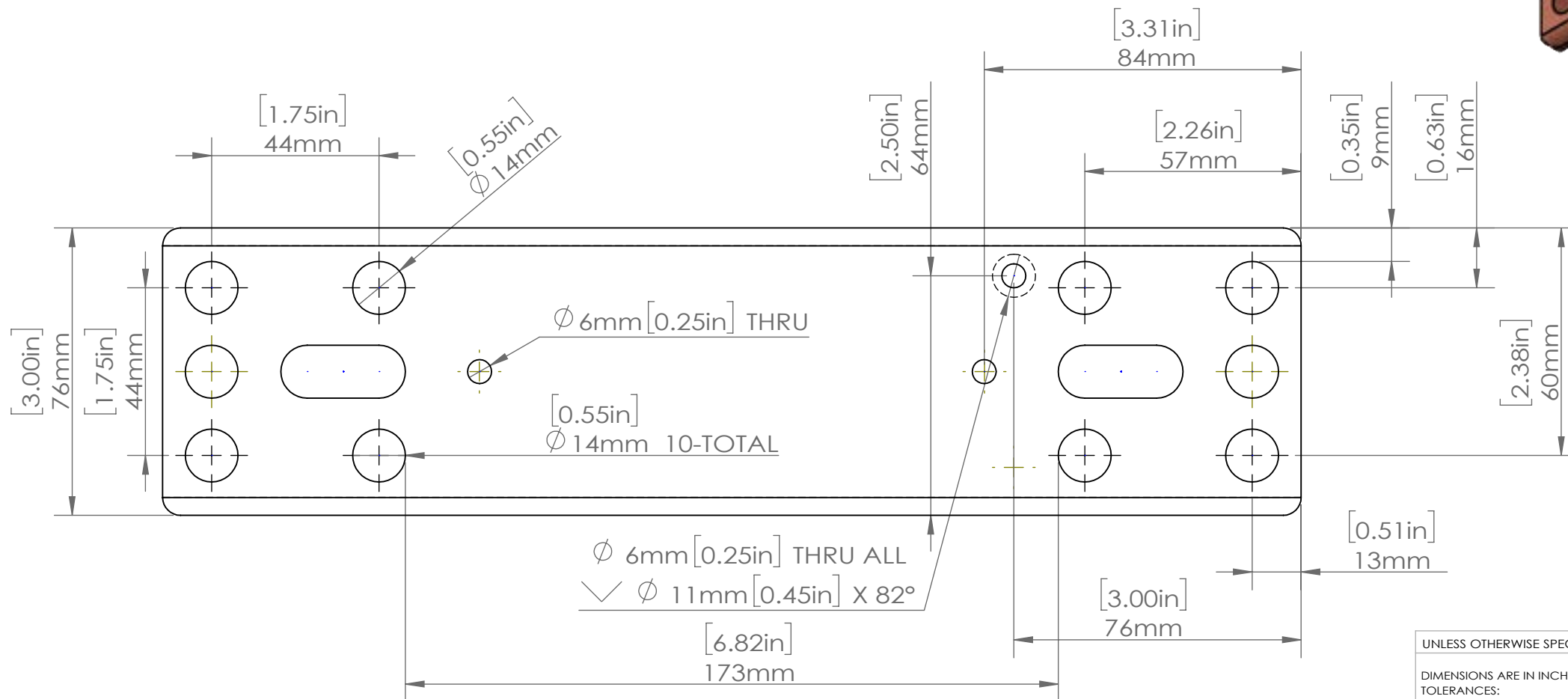
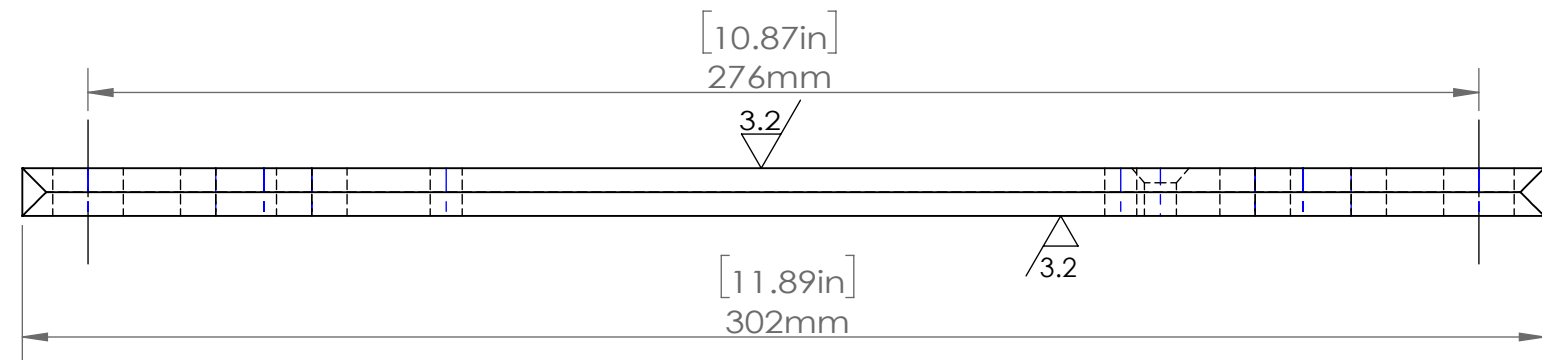
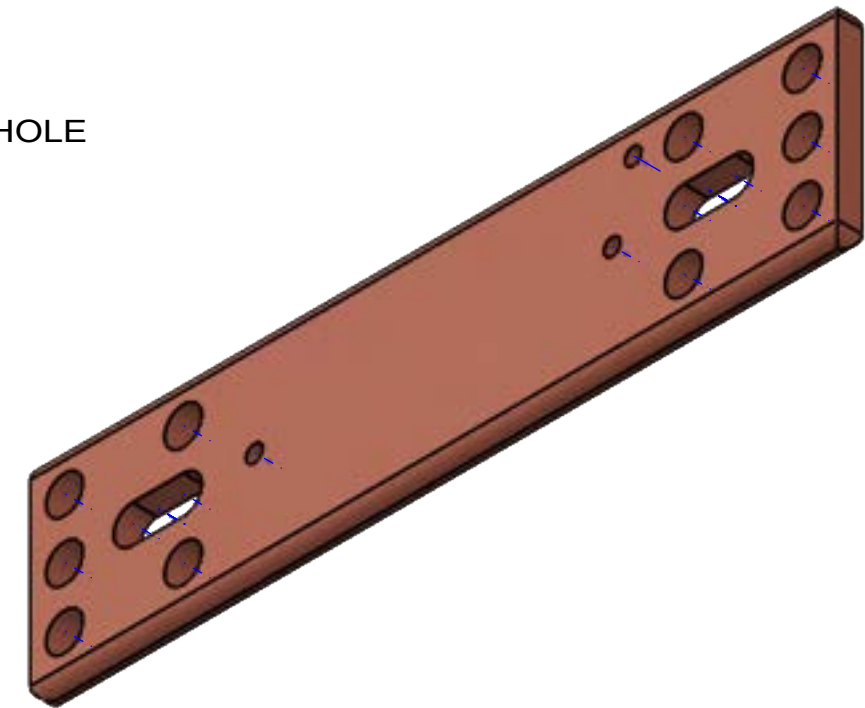
27

2

1

NOTE:

1. PART NUMBER: MCR-080-1024-001
2. SILVER PLATING
3. DEBURR ALL SHARP EDGES
4. WHEN PUNCHING HOLES THE EXIT SIDE OF THE PUNCH SHOULD BE THE SAME SIDE OF THE COUNTERSINK HOLE
5. MAX CURRENT : 1800A @ 65C TEMP RISE



UNLESS OTHERWISE SPECIFIED:		ECN-1022001	10/12/22
DIMENSIONS ARE IN INCHES		ECN-02190001	2/15/19
TOLERANCES:		ECN-1119001	11/04/19
FRACTIONAL ± 1/32		ECN #	Approved Date
ANGULAR: MACH ± 1°			
TWO PLACE DECIMAL ±.032			
THREE PLACE DECIMAL ±.005			
INTERPRET GEOMETRIC TOLERANCING PER:		NAME	DATE
MATERIAL	Copper	DRAWN BY	L. WANG 12/06/17
FINISH	SEE NOTES	REVISED BY	L. WANG 10/12/22
		APPROVED BY	L. WANG 11/04/19
DO NOT SCALE DRAWING			

DESCRIPTION: <b>COM CONDUCTOR</b>		
SIZE	DWG. NO.	REV
<b>B</b>	<b>MCR-080-1024</b>	<b>P15</b>
SCALE: 1:1.5	WEIGHT: N/A	SHEET 1 OF 3

**PROPRIETARY AND CONFIDENTIAL**

CONFIDENTIAL INFORMATION: This drawing and all information associated therewith contains the proprietary and confidential information of Peak Demand Inc., and is subject to patent, trademark, copyright, or trade secret protection. This drawing, or any information associated therewith, may not be reproduced, used, or disclosed without the prior written consent of Peak Demand Inc.

Copyright 2017 Peak Demand Inc. All rights reserved.

4

3

2

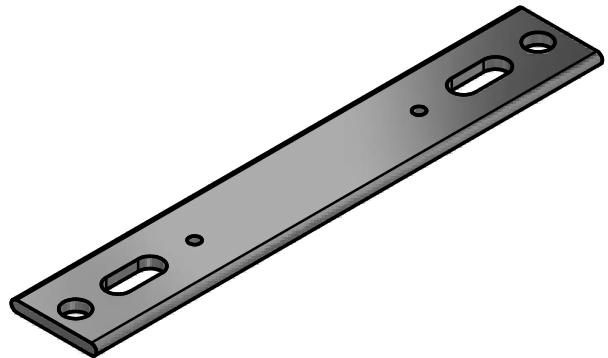
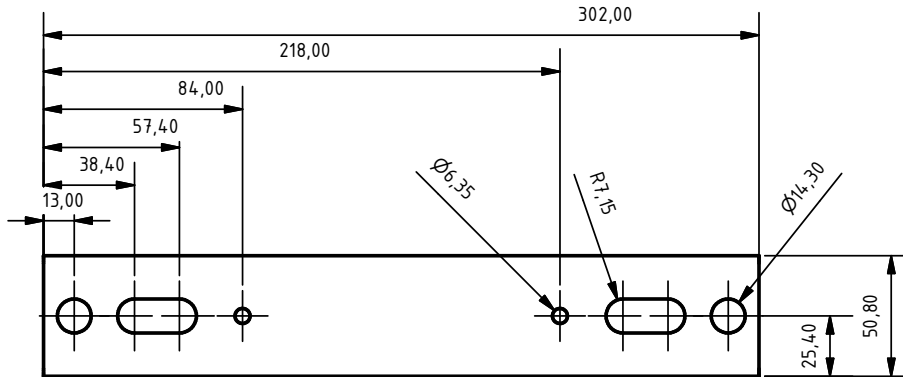
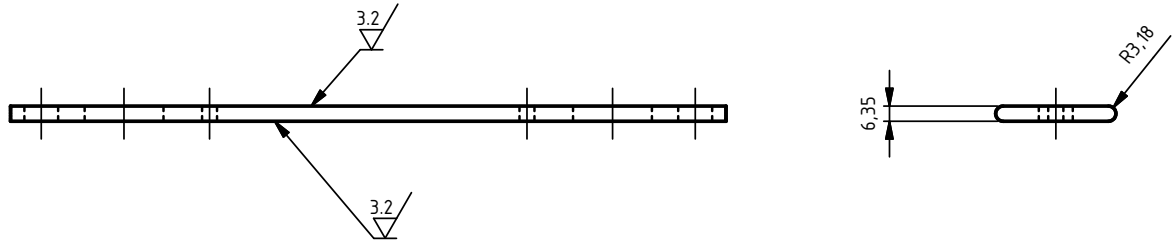
1

4

3

2

1



Zul. Abweichung für untol. Maße								DIN ISO 2768-1 m
General tolerances (mm) for dimensions								
w/o individual tolerances acc.								DIN ISO 2768-1 m
> 0.5	> 3	> 6	> 30	> 120	> 400	> 1000	> 2000	
...3	...6	...30	...120	...400	...1000	...2000		
± 0.1	± 0.1	± 0.2	± 0.3	± 0.5	± 0.8	± 1.2	± 2	

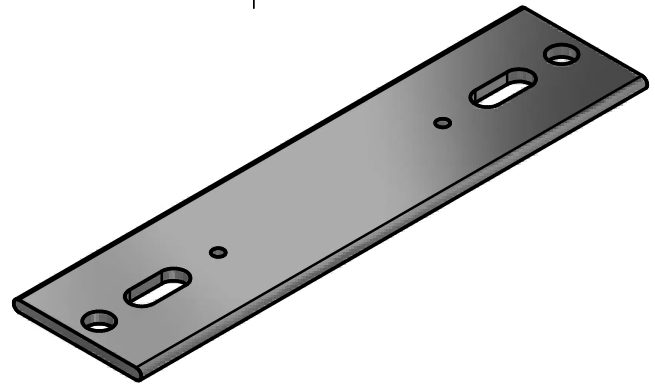
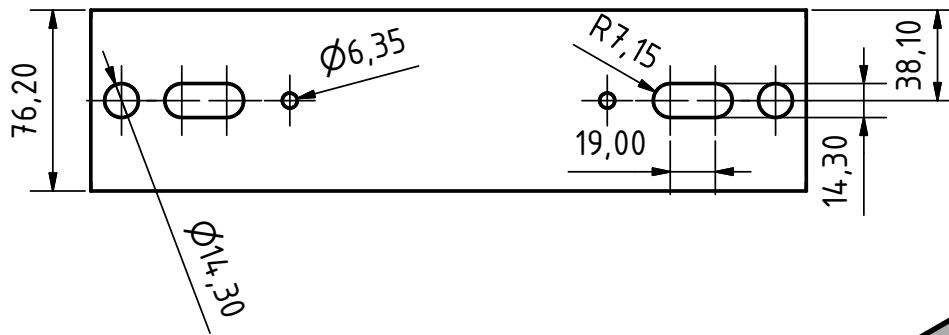
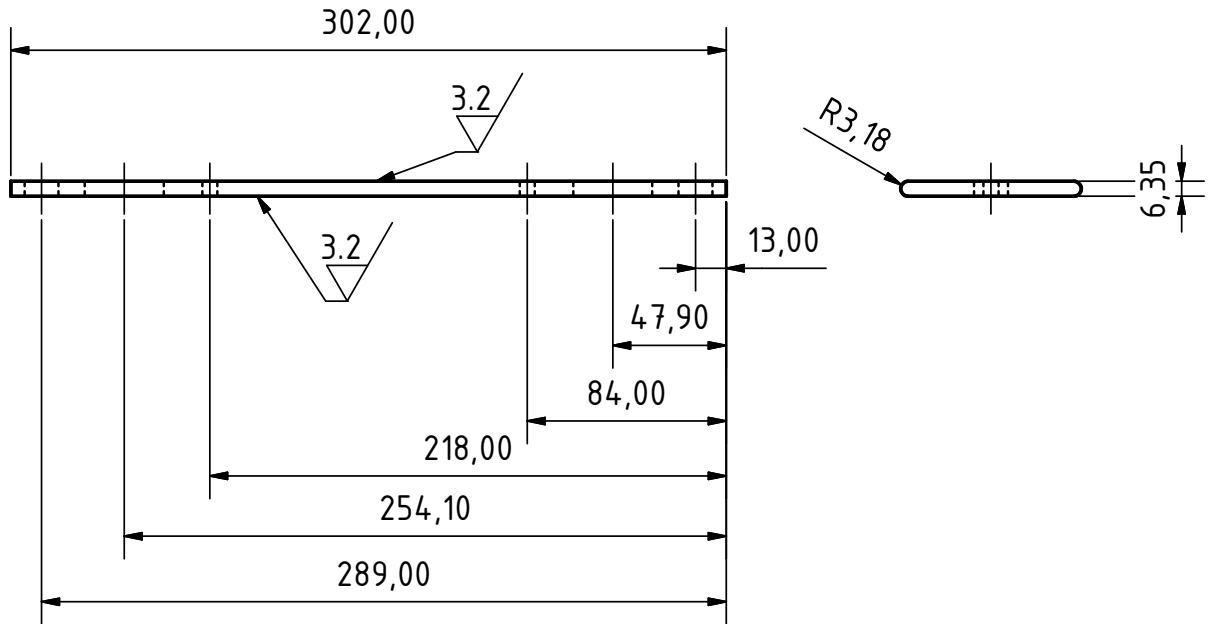
Geringe Maß- und Konstruktionsabweichungen vorbehalten!  
Small deviations in dimension and design possible!

Die Zeichnung und darin enthaltene Informationen sind Eigentum von Ritz. Sie sind vertraulich und dürfen nicht verbreitet oder kopiert werden ohne schriftliche Genehmigung. Sie sind auf Verlangen zurückzugeben. Schutzrechtsanmeldung behält sich Ritz vor.

This drawing and all information there on is property of Ritz. It is confidential and must not be made public or copied unless authorised in written by Ritz. It must be returned on demand. Ritz reserves the right to file intellectual property right.

Werkstoff/Abmessung material/dimension		Oberfläche/surface		Urheberschutz nach DIN ISO 16016		Maßstab/scale bei / ref. to DIN A4 1:3		Gewicht/weight N/A	
Copper Bright Tin Plating				copyright acc. to DIN ISO 16016		Bemerkungen/comment			
Maße in mm / All dimensions in mm				Benennung/designation					
900A MAX		Datum/date		Name/name		DCCB Bus Bar			
		5/7/2014		CK					
04 dia/tol. change		01.14.19		CB		Zeichnungsnummer/drawing number			
03 Added Tin plating		11.02.15		CB					
Index		Datum date		Name name		Dateiname data file name		Blatt / page 1 von / of 1	
						9.08.13.860.611.03.idw		9.08.13.860.611 04	





Zul. Abweichung für untol. Maße								DIN ISO 2768-1 m
General tolerances (mm) for dimensions								
w/o individual tolerances acc.								DIN ISO 2768-1 m
> 0.5	> 3	> 6	> 30	> 120	> 400	> 1000	> 2000	
...3	...6	...30	...120	...400	...1000	...2000		
± 0.1	± 0.1	± 0.2	± 0.3	± 0.5	± 0.8	± 1.2	± 2	

Geringe Maß- und Konstruktionsabweichungen vorbehalten!  
Small deviations in dimension and design possible!

Die Zeichnung und darin enthaltene Informationen sind Eigentum von Ritz. Sie sind vertraulich und dürfen nicht verbreitet oder kopiert werden ohne schriftliche Genehmigung. Sie sind auf Verlangen zurückzugeben. Schutzrechtsanmeldung behält sich Ritz vor.

This drawing and all information there on is property of Ritz. It is confidential and must not be made public or copied unless authorised in written by Ritz. It must be returned on demand. Ritz reserves the right to file intellectual property right.

Werkstoff/Abmessung material/dimension		Oberfläche/surface		Urheberschutz nach DIN ISO 16016		Maßstab/scale bei / ref. to DIN A4 1:3		Gewicht/weight N/A	
Tin plated Copper (Bright Tin)				copyright acc. to DIN ISO 16016		Bemerkungen/comment			
Maße in mm / All dimensions in mm		Datum/date		Name/name		Benennung/designation			
1200A Max		5/7/2014		CK		DCCB Bus Bar			
05	Hole Dia Revised	01/28/19	CB	Begr. drawn		Zeichnungsnummer/drawing number		Index	
04	Tolerance Mod.	11/4/14	CB	Gepr. checked		9.08.13.860.612		05	
03									
02									
01	Added Dimensions	10/30/14							
index		Änderung revision		Datum date		Name name		Dateiname data file name	
						9.08.13.860.612.04.idw		(Ers.f.)/(sub.for)	
								Blatt / page 1 von / of 1	





# Current Transformers

## Purpose

Current transformers are always connected in series with the circuit being measured. A current transformer (CT) has two purposes. First, to reduce the current in the circuit being measured to a lower value. Second, to isolate the meter from high voltages. You might ask, "How could a CT isolate the meter from high voltages"? Suppose you need to meter a 7,200-volt circuit. The current being measured may be less than 200 amps, which could normally be handled with a self-contained meter. However, there is no way to bring the current flow through the meter's current coil without bringing 7,200 volts with it. Therefore, a CT is used to keep the high voltage out of the meter socket even though the current does not actually need to be reduced. If voltage transformers are used to reduce metering voltage, CT's will be required to prevent the high voltage from entering the meter socket no matter what the current levels will be. Voltage for potential coils in the meter should always be picked up on the H1 side of the CT. This prevents the CT from registering the energy used by potential coils in the meter as energy used by the customer.

Stated once again, current transformers have two purposes, to reduce the current in the circuit being measured to a lower value and frequently to keep high voltage out of the meter socket.

**Caution: The secondary circuit of a current transformer should never be opened when a load is passing through it's primary!**

(See shorting bars, self-shortening devices, and test switches).

## Ratio

The ratio of a current transformer refers to the turns ratio of the windings. For example, a

200/5 transformation is equivalent to a 40 to 1 ratio. (200 divided by 5 is 40). The secondary of a CT is always stated to be 5 amps at the rated primary winding current.

## Transformer Factor

A current transformer with a 200/5 ratio is said to have a transformer factor (TF) of 40. Knowledge of the TF is required when calculating the dial multiplier.

## Rating Factor

Current transformers may be overloaded without a loss of accuracy. This overload rating is known as the rating factor (RF). **When sizing CT's, you should normally use the lowest ratio available while utilizing the RF rating of the CT.** Appropriately sized CT's should always produce from .25 amps (light load) up to the class rating of the instrument meter they are working with which is usually 10 or 20 amps. For example, assume you are going to meter a load that may occasionally reach 1200 amps. However, the load may also be as little as 40 amps. By utilizing a 400/5 CT with an RF of 3.0, the CT can easily handle 1200 amps with no loss of accuracy while sending 15 amps to the meter. When the load drops to 40 amps, the CT will still be sending  $\frac{1}{2}$  (.5) amps to the meter. It should be noted that since the CT will produce up to 15 amps, a class 20 meter will be required for this application. If a 1200/5 CT had been used for this application, the CT would only produce .17 amps when the 40 amp

load was present. This is below the light load test amp rating for instrument meters and may cause a loss of accuracy.

Many CT's have a RF rating at 30 degrees Celsius (86° F) and a lesser rating at 55 degrees Celsius (131° F). For example, a 400/5 CT may have a RF rating of 4.0 at 30° C and 3.0 at 55° C. If the CT will be heavily loaded on a hot day or if the CT is in a metal enclosure with little air circulation, the lower rating should be used.

## **Type**

Several variations of current transformers exist. However, there are actually three basic types, window, bar, and wound. Window and bar type CT's are normally used to meter circuits of 600 volts and less. The wound type is used for high voltage circuits in excess of 600 volts.

When using the window type current transformer the customer's secondary is passed through the window of the CT. This conductor is considered to be the primary turn of the CT. Often it is necessary to take more than one turn through the window. Generally speaking, each additional turn reduces the ratio. For example, two turns through a 400/5 CT makes it equivalent to a 200/5 ratio. To calculate the ratio when multiple turns are present, divide the ratio as usual and then divide your answer by the total number of turns. For example, if you have two turns through the window of a 400/5 CT, divide 400 by 5, which is 80. Then divide 80 by the 2 turns, and you get 40, which is the transformer factor.

Often, bar type CT's are just window CT's with a solid bar installed. Connectors on each end of the bars also allow easy access for picking up voltage for the potential coils in the meter. Some bar type CT's are designed with a removable bar, which allows the CT to be converted to a window type.

Wound type CT's are more commonly found in high voltage circuits. Although multiple turns are not possible because of the fixed primary winding, multi-ratio CT's are available. Although these wound type CT's are larger because of the additional insulation, the same principles apply as stated for window and bar type CT's.

## **Polarity**

A meter stator contains a potential coil and one or more current coils. These coils provide both voltage and current signals to the meter. The stator must be able to compare these two signals at any moment in time. Therefore, to establish forward rotation of the meter disk, polarity marks on instrument transformers must be observed. Incorrect polarity connections will result in reverse rotation of the meter disk. All instrument transformers are wound subtractive. This simply means that H1 and X1 polarity marks are physically located directly across from one another. (Additive power transformers have H1 and X1 bushings located diagonally across from one another).

## **Accuracy**

Simply stated, current transformers should be rated for plus or minus .3% (3 tenths of one percent) accuracy when used for metering.

## **Burden Rating**

The burden on a current transformer is the ohm value in the secondary circuit, which passes through the current coil in the meter. The wiring from the CT to the meter is also part of the connected burden.

Wire size and clean tight connections are critical. As a general rule, if the meter is within 30 feet of the CT, number 12 copper wire may be used. Distances greater than 30 feet require number 10 copper wire or larger.

The thermal burden rating usually coincides with the primary rating factor (RF). Exceeding this rating will shorten the life of the CT and may cause a loss of accuracy.

## Shorting Bars, Self-Shorting Devices, and Test Switches

Current transformers are designed to have their X1 secondary lug connected to the top of the meter's current coil. The X2 secondary lug is normally connected to the bottom of the same current coil. When load is passing through the primary of the CT and the secondary is connected properly, very little voltage is present in the secondary circuit. These connections to the current coil in the meter provide a short circuit, which is appropriate for normal operation.

If current is passing through the primary of a CT, and the secondary circuit is not connected to the current coil, a very high and dangerous voltage will be present. The CT becomes a voltage step-up transformer under this condition. Therefore, it is important to always short the X1 and X2 terminals to each other before breaking the circuit. **Shorting bars** are permanently installed on most CT's for this purpose. Simply stated, if you need to rewire a metering installation or change the meter while maintaining service to the customer, the shorting bar may be closed from X1 to X2 to prevent dangerous voltage buildup. (Shorting bars that are inadvertently left closed will cause a loss of revenue)!

An alternative (although a poor one) for using the shorting bar when changing a meter, is the meter socket with **self-shortening devices**. A self-shortening device in a meter socket is supposed to bypass the current coils in the meter as the meter is being removed from the socket. This action is designed to maintain continuity in the CT secondary circuit and therefore prevent dangerous high voltage buildup. Never trust these devices! They are spring loaded and may hang-up due to dirt, cob webs, etc... In addition, these self-shortening mechanisms may get damaged over time and cause partial shorting of the CT which will result in a loss of revenue.

Instrument-rated meter sockets with **test switches** provide an excellent method of shorting CT circuits as well as disconnecting voltage sources to the potential coils in the meter. By utilizing these test switches, meters may be changed safely and efficiently. Test switches also provide an opportunity to energize individual stators in the meter. This is important when verifying that an instrument-rated metering installation has been wired correctly. Color coded test switch handles may be ordered to match the utilities wiring color code. This enhancement simplifies wiring of the meter socket.

As a final note, CT's are not like capacitors. They do not hold a charge. However, they are very dangerous when a load is passing through their primary and the secondary circuit is open.

**Never open the secondary of a CT while load is passing through the CT's primary!**







# RITZ INSTRUMENT TRANSFORMERS, INC.

## Low-Voltage Extended-Range Current Transformers (ERCTs)

### Overview

Ritz has long been regarded as the industry leader in providing cutting-edge metering accuracy performance for instrument transformers. In the 1990's, Ritz introduced the Medium-Voltage Extended-Range Current Transformer (MV ERCT). This technology is now available in the Ritz Low-Voltage CT offering for utility metering applications.

The Ritz ERCT design offers 0.15% accuracy performance from 1% nominal current up to the rating factor. This performance surpasses all of the metering accuracy classes defined under IEEE and CSA.

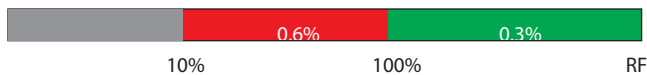
### Applications

Since CT error gets more negative as the current level decreases, having better accuracy performance at lower current levels can result in less lost revenue at instrument-rated metering points. Also, the wider than normal current range of the Ritz ERCT offers the opportunity for users to drastically reduce the number of different ratios needed for a given style CT, thus reducing the amount of inventory needed to respond to customer demands.

### Accuracy Class Definitions

The historical revenue metering class is 0.3 and in recent years, standards have defined high-accuracy revenue metering classes of 0.15 and 0.15S. The Ritz ERCT rating offers better accuracy down to lower currents than any standard defined accuracy class.

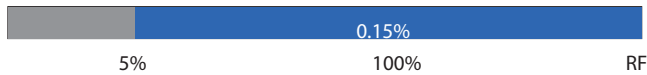
#### Class 0.3 - Revenue Accuracy



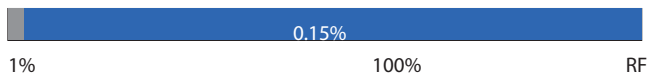
#### Class 0.15 - High Accuracy



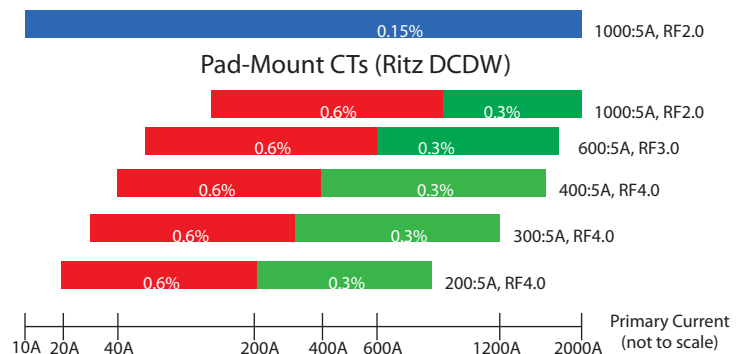
#### Class 0.15S - High Accuracy



#### Ritz Extended-Range (ERCT)



### Example of Ritz ERCT Consolidation



### Advantages

- Increases revenue due to more accurate and wider range
- Reduction of inventory levels
- Consolidation to 1 or 2 ratios per CT type
- Standardization of meter multipliers
- Reduces chance of incorrect CT sizing
- Eliminates the need for dual-ratio designs

**DCAW/B**

The DCAW/B is for use in 600V metering circuits, normally in an enclosure or transocket. This unit can be purchased as a window-type (W) or a bar-type (B). The DCAW/B ERCT design is offered with a 600:5A ratio offering 0.15% performance from 6A up to 1200A.

Ratings: 600:5A, 0.15S B0.2, 6A to 1200A, RF2.0 @ 30C (RF1.5 @ 55C)

Type	Catalog Number	Feature
DCAW	110601001.0810	No Base
DCAW	110601002.0811	Low Base
DCAW	110601003.0812	High Base
DCAB	110601001.0813	No Base
DCAB	110601002.0814	Low Base
DCAB	110601002.0815	High Base



**DCEW/B**

The DCEW/B is for use in 600V metering circuits, normally in an enclosure or in switchgear. This unit can be purchased as a window-type (W) or a bar-type (B). The DCEW/B ERCT design is offered with a 2000:5A ratio offering 0.15% performance from 20A up to 4000A.

Ratings: 2000:5A, 0.15S B0.9, 20A to 4000A, RF2.0 @ 30C (RF1.5 @ 55C)

Type	Catalog Number	Feature
DCEW	110601012.0816	Without Mounting Bracket
DCEW	110601012.0817	With Mounting Bracket
DCEB	110601012.0818	Without Mounting Bracket
DCEB	110601012.0819	With Mounting Bracket



**DCCW/B**

The DCCW/B is for use in 600V metering circuits, normally in an enclosure or for overhead services. This unit can be purchased as a window-type (W) or a bar-type (B). The DCCW/B ERCT design is offered with a 600:5A ratio offering 0.15% performance from 6A up to 1800A.

Ratings: 600:5A, 0.15S B0.5, 6A to 1800A, RF3.0 @ 30C (RF2.2 @ 55C)

Type	Catalog Number	Feature
DCCW	110601007.0800	No Base
DCCW	110601008.0801	Low Base
DCCW	110601009.0802	High Base
DCCW	110601010.0803	Wide Base
DCCB	110601007.0804	No Base
DCCB	110601008.0805	Low Base
DCCB	110601009.0806	High Base
DCCB	110601010.0807	Wide Base



**DCDW**

The DCDW is for use in 600V metering circuits, normally in pad-mount distribution transformers. This unit is available in a 500:5A, 1000:5A, or 2000:5A ratio with 0.15% performance from 1% Inom to RF.

Ratings: 500:5A, 0.15S B0.2, 5A to 2000A

Type	Catalog Number	Feature
DCDW	110601011.0832	- RF4.0 @ 30C (RF3.0 @ 55C)
DCDW	110601011.0833	- RF3.0 @ 85C



Ratings: 1000:5A, 0.15S B0.5, 10A to 2000A

Type	Catalog Number	Feature
DCDW	110601011.0808	- RF2.0 @ 30C (RF1.5 @ 55C)
DCDW	110601011.0809	- RF2.0 @ 85C

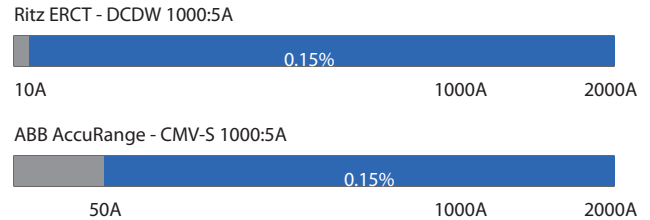
Ratings: 2000:5A, 0.15S B0.5, 20A to 4000A

Type	Catalog Number	Feature
DCDW	110601011.0822	- RF2.0 @ 30C (RF1.5 @ 55C)
DCDW	110601011.0823	- RF1.5 @ 85C

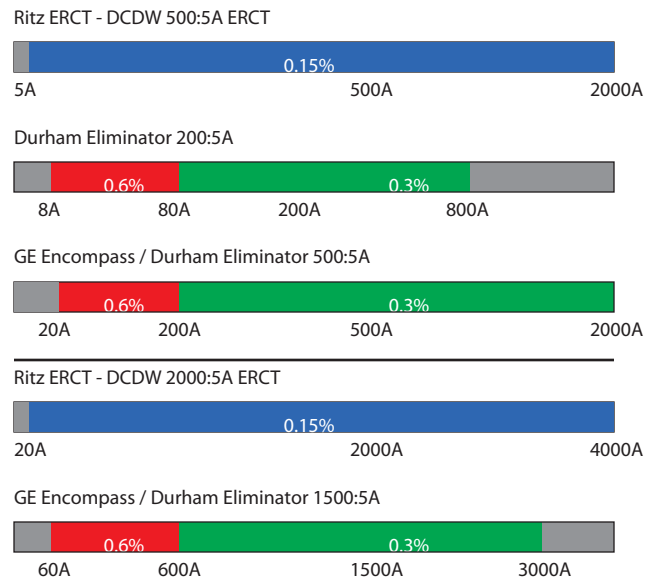
**Comparison to Competitor Designs**

The following is a comparison to offerings from other manufacturers based on the printed literature.

The Ritz ERCT design offers 0.15% accuracy performance down to 5 times lower current levels than the ABB AccuRange design.



The Ritz ERCT design is more accurate across a wider range than the GE Encompass design and the GEC Durham Eliminator design. The ERCT accuracy performance is rated 4 times better at low current levels where customers tend to lose the most revenue.



**RITZ INSTRUMENT TRANSFORMERS, INC.**

25 Hamburg Avenue • Lavonia, GA 30553 USA  
 706-356-7180 • www.ritzusa.com  
 e-mail: sales@ritzusa.com

SALES REPRESENTATIVE





Improving safety and revenues through more accurate and reliable electrical metering.

## A6003012 2.5:1 12.5VA

### VT Packs - VT Pucks

This VT Pack™ is for 480/277 4-wire wye applications where traditional 2.5:1 VTs are used. For all other 480V applications, we recommend other versions, see catalog for various options.

This VT Pack consists of three revenue-accuracy toroidal voltage transformers for use with modern wide voltage range electronic watt-hour meters or older induction (disk-type) meters. The transformers are encased in epoxy inside a UV-resistant polycarbonate enclosure.

This VT Pack can be used with either standard transformer-rated meters or the Form 9S, Class 200 solid state polyphase meter. The connector on the VT Pack mates with the wiring harness of our sockets or block assemblies. For existing transformer-rated applications, a color-coded wiring harness is available either with our standard color code or can be supplied in custom color-coding and lengths to meet your Company's requirements.

The VT Pack can be mounted in a pad mount transformer, transformer cabinet, on the outside of an existing meter socket, or other convenient location. The keyhole slot on the VT Pack makes mounting on any 1/4" mounting screw or shoulder rivet quick and easy. The VT Pack can also be mounted on a cross arm, pole or other suitable outdoor location when used with the optional Connector Cover.



---

Weight:	<b>14 lbs</b>
Collar Diameter:	<b>2.2"</b>
Connector:	<b>9 pin, 600 volt, UL</b>
Enclosure:	<b>Light gray, UV resistant polycarbonate</b>
Insulation level:	<b>10 kV BIL</b>
Over voltage withstand:	<b>600V for 1 minute.</b>
Transformer type:	<b>Toroidal autotransformer</b>
Size:	<b>12 3/16" long by 4" wide by 3 1/16" deep, including 1" deep collar</b>
Accuracy:	<b>+/-0.3 @ 12.5 VA @ .1 PF lag</b>
Thermal Rating:	<b>150 VA @ 30 degrees C</b>

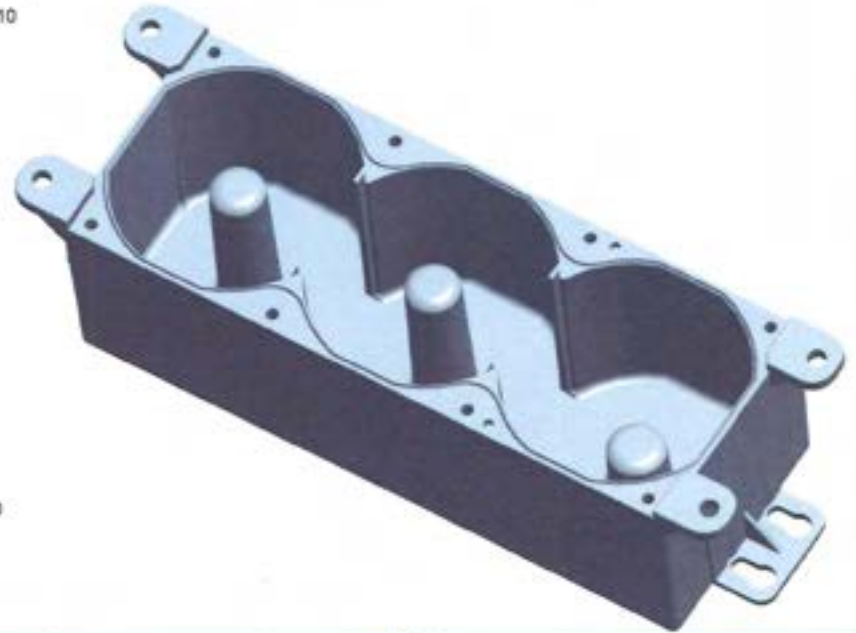
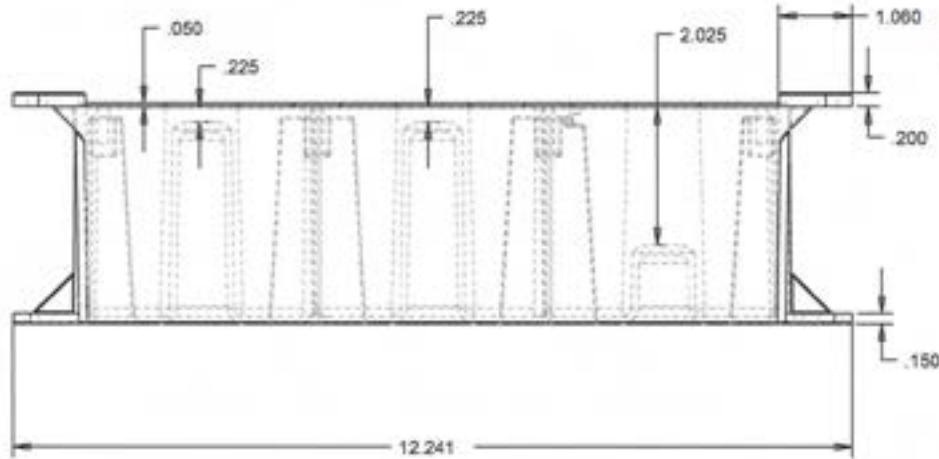
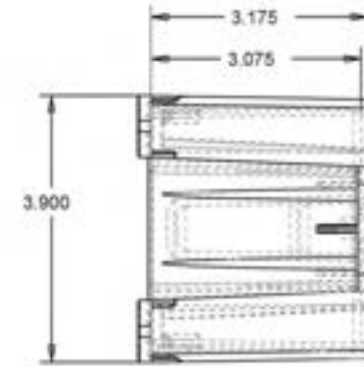
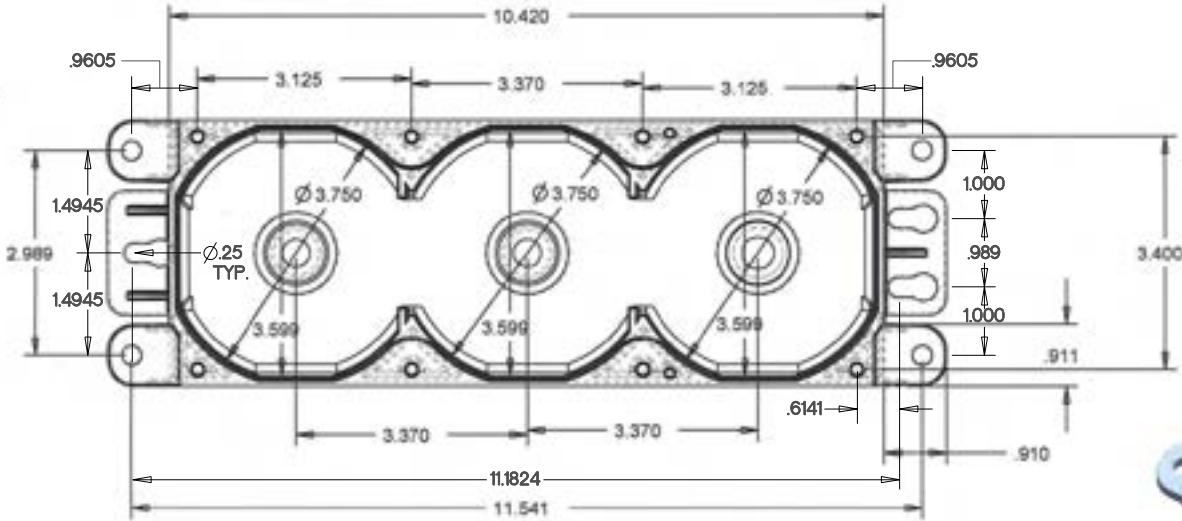
---

Copyright © 2019 TSTM, Inc. | 2900 Sencore Drive Suite 100 | Sioux Falls, SD 57107  
P: 1.605.334.2924 | F: 1.605.334.4713




NOTES: (Unless otherwise specified)

revisions					
rev	ecc	description	location	date	approved



Tolerances
(unless otherwise indicated)
2 place decimals: ± .020
3 place decimals: ± .005
angles: ± 1.0°

 <small>2302 13th Street Lubbock, Texas 79423 Phone: (806) 741-6474 Fax: (806) 740-6447</small>	<b>client</b> TSTM	
	<b>part</b> VT-001-1	
<b>drawn</b> _____	<b>dwg no.</b> _____	<b>rev.</b> _____
<b>engineer</b> _____	<b>scale</b> _____	<b>size</b> C
<b>checked</b> _____	<b>date</b> _____	<b>sheet</b> 1 of 1

VT Pack color code (we use TSTM's standard wiring harnesses/color code)

**High-side connections (H1)**

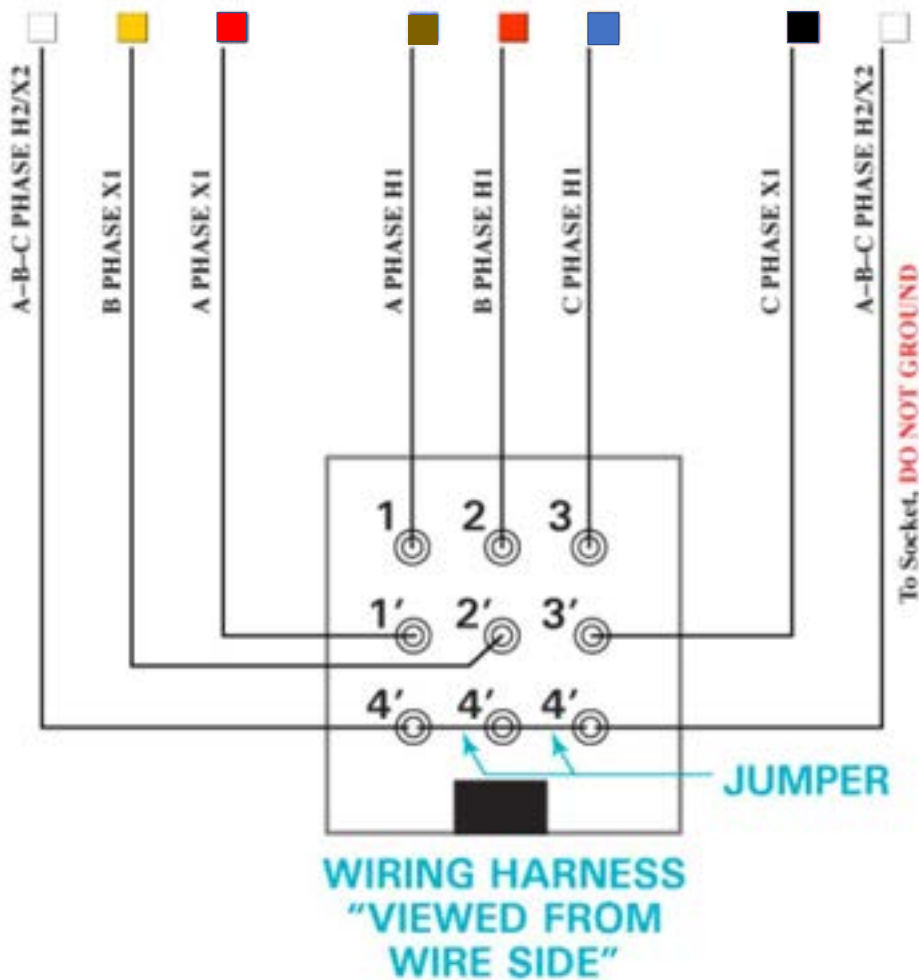
- A Phase - Brown
- B Phase - Orange
- C Phase - Blue

**Low-side connections (X1)**

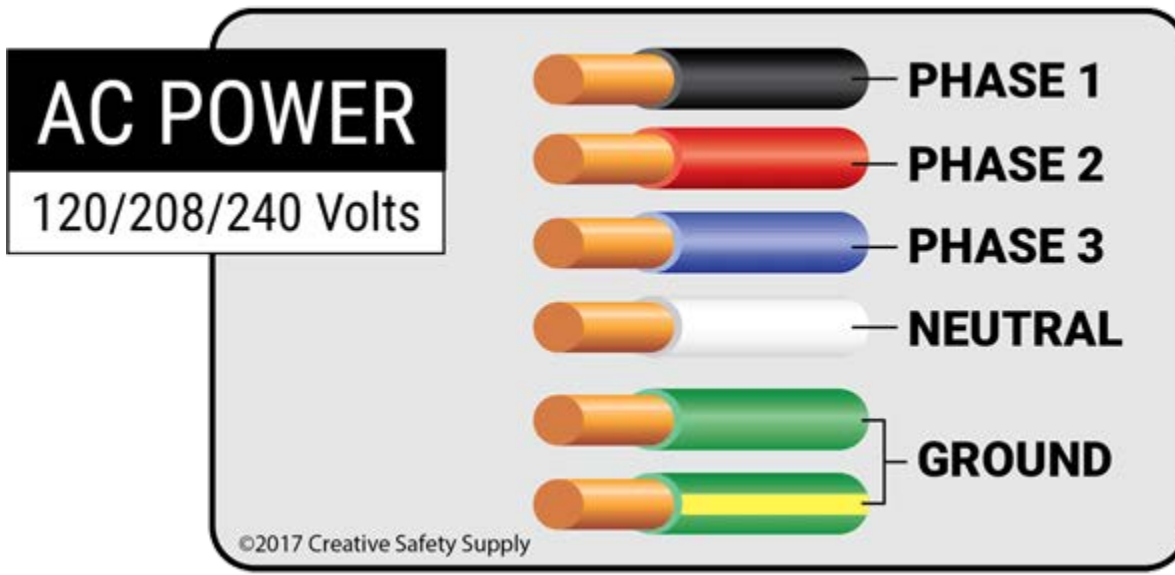
- A Phase - Red
- B Phase - Yellow
- C Phase - Black

**Neutral/Ground (H2 / X2)**

White



All wires are #14CU, stranded, THHN

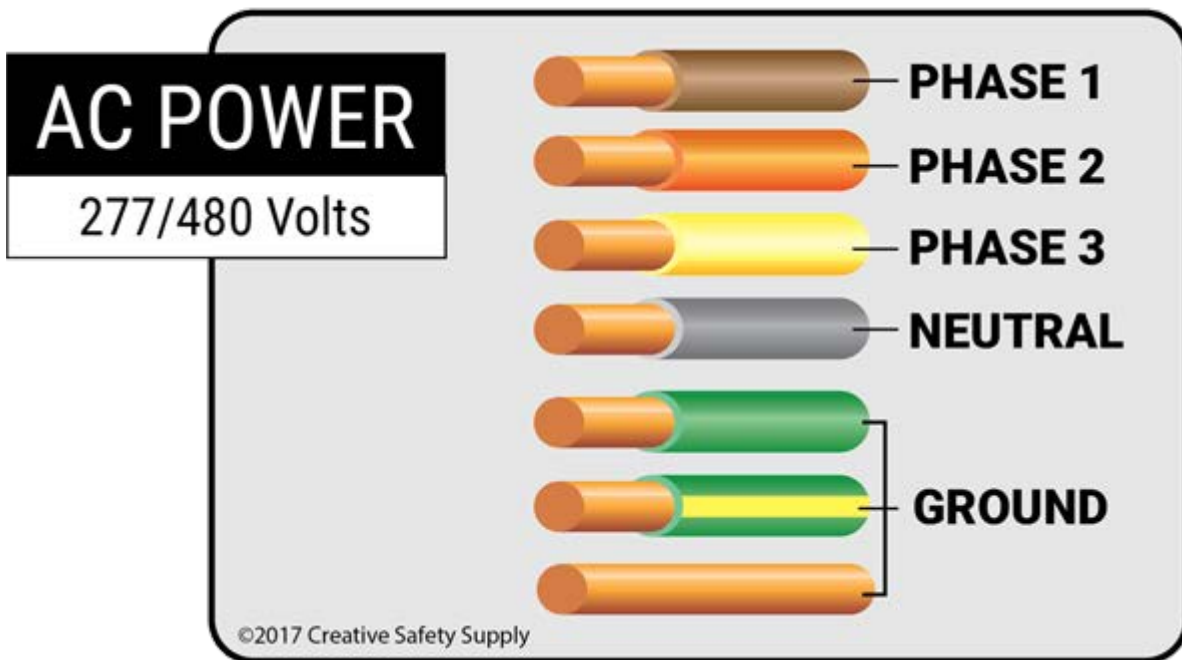


## AC Power (120/208/240 Volts)

AC power comes in many different types based on how many volts the wires will be carrying. For wires that will be 120, 208 or 240 volts, the following wiring color standards are used. It is important to note that with this type of wiring, there are multiple phases in place, each of which will get its own color wire to make it clear what it is for those working on it.

- **Phase 1** - Phase 1 wiring should be black.
- **Phase 2** - Phase 2 wiring should be red.
- **Phase 3** - Phase 3 wiring should be blue.
- **Neutral** - Neutral wiring should be white.
- **Ground** - Ground wiring can be green or green with a yellow stripe.

In some uncommon situations, one phase will have a higher voltage than the others. These are known as high-leg connections. While rare, they can be identified by looking for a wire that is marked with orange, which will be the higher voltage wire.



## 277/480 Volt Wire Color Standards

These high-voltage connections are quite common in many manufacturing and other industrial areas. Due to the serious potential for deadly electrocution or other issues, getting these color codes right is essential.

- **Phase 1** - Phase 1 wiring should be brown.
- **Phase 2** - Phase 2 wiring should be orange.
- **Phase 3** - Phase 3 wiring should be yellow.
- **Neutral** - Neutral wires should be grey.
- **Ground** - - Ground wiring should be green, or green with a yellow stripe.

### 1Ø amps to kVA calculation formula

The apparent power S in kilovolt-amps is equal to current I in amps, times the voltage V in volts, divided by 1000:

$$S_{(kVA)} = I_{(A)} \times V_{(V)} / 1000$$

or

$$S_{(kVA)} = \text{Amps} \times (208,240 \text{ or } 480) / 1,000$$

### 3Ø amps to kVA calculation formula

(Calculation with line-to-line voltage)

The apparent power S in kilovolt-amps is equal to phase current I in amps, times the line-to-line RMS voltage  $V_{L-L}$  in volts, divided by 1000:

$$S_{(kVA)} = \sqrt{3} \times I_{(A)} \times V_{L-L(V)} / 1000$$

or

$$S_{(kVA)} = 1.73 \times \text{Amps} \times (208,240 \text{ or } 480) / 1,000$$

### Demand Calculations

$$\text{kWh (15-min)} \times 4 = \text{kW}$$

$$\text{kW (hourly)} / 4 = \text{kWh (15-min)}$$

$$\text{kW (hourly)} \times 1 = \text{kWh}$$

$$\text{kW (15-min)} \times 4 = \text{kWh (15-min)}$$

$$\text{Volts} \times \text{Amps} = \text{Watts}$$

$$\text{Watts} / 1000 = \text{kW}$$

### Power Factor Calculation

This is how MV-90 calculates Power Factor:

$$\text{PF} = \text{kW} / (\sqrt{\text{kW}^2 + \text{kvar}^2})$$

or

(if you have kVA already calculated):

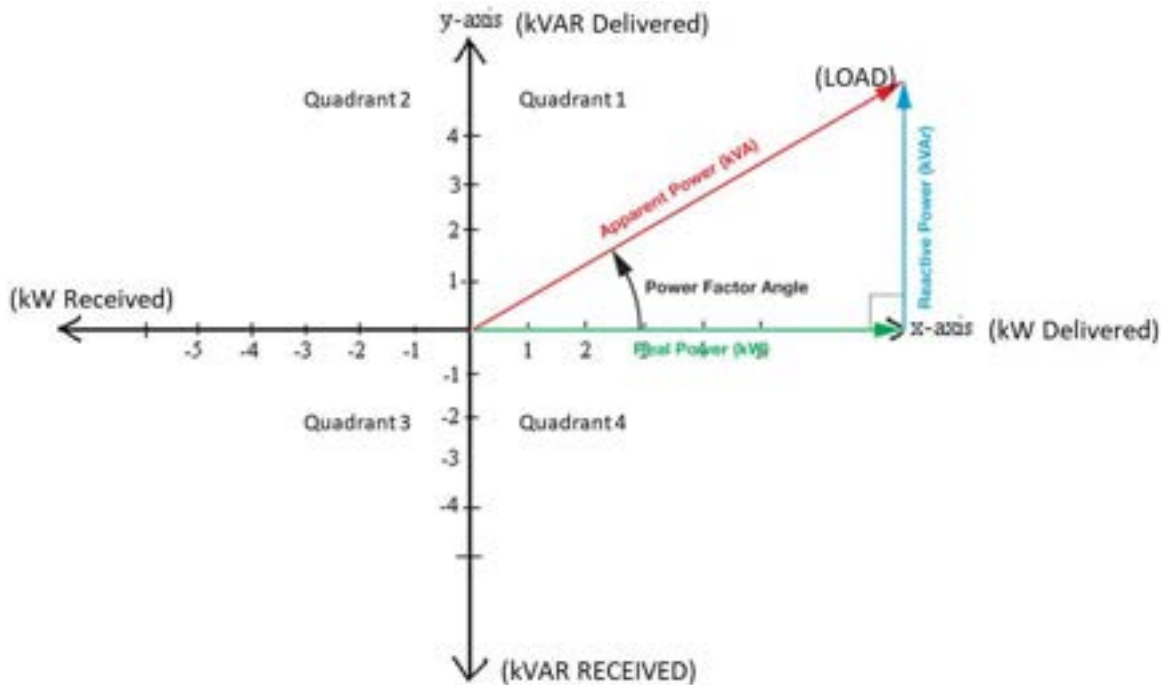
$$\text{PF} = \text{kW} / \text{kVA}$$

### Calculate Peak kW to Amps

Example: If you have 65 Peak kW on a 1Ø service

$$65 \times 1,000 = 65,000 / 240 \text{ (voltage)} = 270.83 \text{ Amps (for 3Ø divide by 1.73)}$$

## Power Factor Graph



## Meter Accuracy Tolerance Formula

Weighted Average Calculation

$$5/6 - \text{FL (full load)} + 1/6 \text{ LL (light load)} = \text{_____ \%}$$

Per Policy MP-6 Periodic Meter Testing:

All watt-hour meters must be accurate to within plus or minus 2% at full and light load, demand meters shall be accurate to within 1.5%. If the average error on a watt-hour meter is found to be more than 2% or a demand meter error is found in excess of 1.5% in addition to the errors allowed, an adjustment of bills for service for the period of inaccuracy shall be made in the case of over-registration and may be made in the case of under-registration. See Section 12 of the Cooperative's tariff to address adjustments of bills and member request tests or referee tests for meter accuracy.

## Multipliers

Meter Multiplier:

example of multiplier calculation for 200: 5 CT's

$$200 / 5 = 40 \text{ multiplier}$$

example of multiplier calculation for a 2.5:1 PT

$$2.5 / 1 = 2.5 \text{ multiplier}$$

An account with both the 200:5 CT and 2.5/1 PT would be

$$\text{CT Multiplier of } 40 * 2.5 \text{ PT} = 100 \text{ multiplier}$$

Pulse Multiplier (CTs \* PTs = Meter Multiplier; (CTs \* PTs)/1000 = Pulse Multiplier.

The pulses from the 15-minute Load Profile interval are taken times the Pulse Multiplier to equal demand/kwh

### **Rate 5 (CIPCO's Rate A)**

6 – accounts

3 – 1 meter

2 – 2 meters

1 – 3 meters

Demands -

CIPCO Timestamp Seasonal (coincident)

CIPCO Timestamp Monthly (coincident)

Monthly Non-coincident '**HOURLY**' (NetSense describes this as MaxDemand)

Demand charges adjusted for all Pf's (power factor) below 90 = **1% for each 1%**

### **Rate 16 (CIPCO's Rate A-2)**

7 – accounts

3 – 1 meter

4 – 2 meters

Demands -

Firm Demand (No Reading needed, Rate set by CIPCO, manually entered)

Interruptible Demand (No Reading needed, Rate set by CIPCO, manually entered)

Distribution Demand or Non-Coincident '**15-min**' (NetSense describes this as MaxDemand)

Excess Demand (No Reading needed, Rate set by CIPCO, manually entered, 6-month ratchet and manually entered)

Demand charges adjusted for all Pf's (power factor) below 90 = **1% for each 1%**

### **Additive Meters (this is no longer allowed and pertains to existing accounts only)**

The Demand calculations for these meters needs to be done by adding the 15-min demands of each meter together on the spreadsheet and then the Non-coincident, Coincident Demands can be found based in this, basically new meter.

A virtual meter in the MDM should makes this calculation happen automatically.

### **Definitions**

Demand - is measured in kilowatts (kW) and represents the rate at which electricity is consumed.

Coincident Demand - is measured in kilowatts (kW) and is the energy demand required by a given customer or class of customers during a particular time period.

Non-coincident Demand (NetSense describes this as MaxDemand) - is measured in kilowatts (kW) and is the highest level of electrical demand monitored in a period, usually for a month period.

Cumulative Demand - Monthly Non-coincident demands added up. (NetSense describes this as MaxDemand)

Power Factor - the percentage of kWh the load is actually using compared to actually provided.

Example: with a Pf of .90 the load is being provided 10% of the kWh at no cost to the member.

Pf is calculated at the time of MaxDemand in a 15-min period.

Ratchet Months – During pre-determined months (6 - seasonal) the Demand is calculated, and the other 6 months are carried forward from the previous month.

### Time of Day:

Dependent on the time of day (i.e., on-peak {usually during the day} and off-peak {usually at nighttime periods) and/or the day of the week (e.g., Monday through Friday and separately for weekends): The metering system tracks the highest usage anytime during the month under the appropriate time windows. These pricing schedules are referred to as Time of Use (TOU) rates.

### Demand:

Electric power use is metered in two ways: on maximum kilowatt use during a given time period (i.e., kW **demand** typically measured in 15-minute or 30-minute intervals) and on total cumulative **consumption** in kilowatt hours (kWh).

The general theory is that demand charges reflect the utilities' fixed costs of providing a given level of power availability to the customer, and energy charges reflect the variable portion of those costs as the customer actually uses that power availability.

### Load Profile:

It is a variation in the electrical load versus time. A load profile will vary according to customer type (typical examples include residential, commercial, and industrial), temperature and holiday seasons. Power producers use this information to plan how much electricity they will need to make available at any given time.

### kWh/kW RAW vs. Calculated Readings and where to find them:

NISC > CIS > Readings > AMR/Interval History tab

This screen provides both RAW readings as well as the formulas with calculated readings for both kWh and kW.

Cloud Portal > MDM Analytics > Metering > Measurements > Search > Select > On Graph select Actual > Select Date Range > Displays 1 F kWh N/A (kWh)

This screen provides RAW kW. Formula to get actual:

$$\text{kW} = \text{RAW kW} \times \text{Multiplier}$$

$$\text{kWh} = \text{RAW kW} \times \text{Multiplier} / 4 \text{ or}$$

$$\text{kWh} = \text{kW} / 4$$

You may: Edit Graph > Select Meter > Select Channel > 1 F kW (kW) > Add Data to Graph > Build Graph

This will display the RAW MAX kW. Formula to get actual:  $\text{kWh} = \text{RAW kW} \times \text{Multiplier} / 4$

Cloud Portal > MDM Analytics > Metering > Service Location Explorer > Search > Select > VEE Editor

This screen provides Actual 15-min kWh readings.  $\text{kW} = 4 - 15\text{-min kWh intervals added together}$

NetSense > Device > Search > Device Name > Search > Left Click on GEAR > Performance > Device Readings

This screen provides 'Read Values': Actual Consumption > kWh > Self Read & RAW MaxDemand > kW > Self Read





# LINN COUNTY RURAL ELECTRIC COOPERATIVE

Rate Sheet Summary  
Effective Date: April 1, 2023

**Rate Code: 11TOD / 12TOD**  
**Rate Designation: Residential Time-of-Day; Rate Code 11**  
**Residential All-Electric Time-of-Day; Rate Code 12**  
**Class of Service: Single-phase, farm and non-farm residences.**

Monthly Facility Charge	\$ 27.00	
Energy Charge		
Off-Peak 5:01 a.m. to 4:00 p.m.	\$ 0.11450	7 days/week
On-Peak 4:01 p.m. to 10:00 p.m.	\$ 0.15700	7 days/week
Super Saver 10:01 p.m. to 5:00 a.m.	\$ 0.05000	7 days/week
LCREC's Power Supplier Energy Adjustment Charge	EAC Set Monthly	EAC Rider 1
Monthly Transformer Charge	\$ 0.11	per kVa > 75 kVa Transformer
Transformer Minimum Charge	\$ 0.75	per kVa >10 kVa Transformer

**Rate Code: 3MCOM**  
**Rate Designation: Multi-Phase Demand and Energy; Rate Code 03**  
**Class of Service: Multi-phase non-residences and residences**  
 < 75 kW Demand in Jun, Jul, Aug, Dec, Jan, Feb

Monthly Facility Charge	\$ 50.00	
Energy Charge	\$ 0.08750	All kWh
LCREC's Power Supplier Energy Adjustment Charge	EAC Set Monthly	EAC Rider 1
Demand Charge	\$ 5.00	Per kW Demand (Non-coincidental)
Monthly Transformer Charge	\$ 0.11	per kVa > 75 kVa Transformer
Transformer Minimum Charge	\$ 0.75	per kVa >10 kVa Transformer

**Rate Code: 13TOD**  
**Rate Designation: Small Commercial Time-of-Day; Rate Code 13**  
**Class of Service: Single Phase Non-Residence**  
 < 75 kW Demand in Jun, Jul, Aug, Dec, Jan, Feb

Monthly Facility Charge	\$ 27.00	
Energy Charge		
Off-Peak 5:01 a.m. to 4:00 p.m.	\$ 0.11450	7 days/week
On-Peak 4:01 p.m. to 10:00 p.m.	\$ 0.15700	7 days/week
Super Saver 10:01 p.m. to 5:00 a.m.	\$ 0.05000	7 days/week
LCREC's Power Supplier Energy Adjustment Charge	EAC Set Monthly	ECA Rider 1
Monthly Transformer Charge	\$ 0.11	per kVa > 75 kVa Transformer
Transformer Minimum Charge	\$ 0.75	per kVa >10 kVa Transformer

**Rate Code: 4LCOM**  
**Rate Designation: Commercial and Industrial; Rate Code 04**  
**Class of Service: Single and Multi-Phase**  
 > 75 kW Demand in Jun, Jul, Aug, Dec, Jan, Feb (Optional Rate for > 25 kW)

Monthly Facility Charge	\$ 65.00	
Energy Charges	\$ 0.05963	First 100 kW in Demand
	\$ 0.05642	Next 200 kWh in Demand
	\$ 0.04720	Over 300 kWh in Demand
LCREC's Power Supplier Energy Adjustment Charge	EAC Set Monthly	EAC Rider 1
Demand Charge	\$ 14.75	per kW Demand
Demand Charges adjusted for all Power Factors below 90%		
Monthly Transformer Charge	\$ 0.11	per kVa > 75 kVa Transformer
Transformer Minimum Charge	\$ 0.75	per kVa >10 kVa Transformer

**Rate Code 17DFM/ 19DFM/ 38DFM (Optional Rate)**  
**Rate Designation: Heat Plus Residential; Rate Code 17**  
**Small Commercial Single-Phase; Rate Code 19**  
**Small Commercial Multi-Phase; Rate Code 38**

**Class of Service: Single and Multi-Phase Residential and small commercial**  
 < 75 kW Demand in Jun, Jul, Aug, Dec, Jan, Feb

Monthly Facility Charge	\$ 5.00	
Energy Charge	\$ 0.06017	All kWh
LCREC Power Supplier's Energy Adjustment Charge	EAC Set Monthly	ECA Rider 5

Requires Heat Plus Rate Application and Verification prior to meter installation

**Rate Code 5LCOM**  
**Rate Designation: Large Power Service; Rate Code 05**  
**Class of Service: Three Phase**  
 > 1000 kW Demand, Optional for >600 KW

Monthly Facility Charge	\$ 150.00	
Energy Charge	\$ 0.03964	All kWh
LCREC's Power Supplier Energy Adjustment Charge	EAC Set Monthly	EAC Rider 4
Demand Charge		
Seasonal Demand	\$ 7.25	per kW
Coincident Demand Monthly	\$ 8.50	per kW
Monthly Non-coincident Demand	\$ 9.00	per kW
Demand Charges adjusted for all Power Factors below 90%		
Transformer Minimum Charge	\$ 0.75	per kVa >10 kVa

**Rate Code 14TOD (Optional Rate)**  
**Rate Designation: Commercial, Industrial; Time of Day Service; Rate Code 14**  
**Class of Service: Multi-Phase**  
 Optional for > 25 kW

Monthly Facility Charge	\$ 65.00	All kWh
Energy Charge	\$ 0.03644	All kWh
LCREC Power Supplier's Energy Adjustment Charge	EAC Set Monthly	ECA Rider 1
Demand Charge		
On-Peak 4:01 p.m. to 9:00 p.m.	\$ 15.50	7 days/week
Off-Peak 9:01 p.m. to 4:00 p.m.	\$ 7.80	7 days/week
Demand Charges adjusted for all Power Factors below 90%		
Monthly Transformer Charge	\$ 0.11	per kVa > 75 kVa Transformer
Transformer Minimum Charge	\$ 0.75	per kVa >10 kVa Transformer

**Rate Code 16TOD (Optional Rate)**  
**Rate Designation: Large General Service Time of Day, Interruptible Service; Rate Code 1**  
**Class of Service: Three Phase**  
 > 150KW

Monthly Facility Charge	\$ 150.00	
Energy Charges		
On Peak	\$ 0.03186	Summer = June July August
Off Peak	\$ 0.02618	\$ 0.03841
LCREC's Power Supplier Energy Adjustment Charge	EAC Set Monthly	EAC Rider 6
Demand Charges		
Firm Demand	\$ 14.79	Summer = June, July, August 20.83
Interruptible Demand	\$ 10.33	\$ 14.56
Distribution Demand	\$ 7.00	\$ 7.00
Excess Demand	\$ 25.00	\$ 25.00
Demand Charges adjusted for all Power Factors below 90%		
Interruptible Demand shall be calculated as the larger of:		
A. 75 % of the interruptible demand in the previous June, July or August or		
B. The sum of the distribution demand minus contracted firm demand		
Transformer Minimum Charge	\$ 0.75	per kVa >10 kVa

*On-Peak hours shall be from 7:00 a.m. through 8:00 p.m. CST (8 a.m. to 9:00 p.m. during daylight savings time), Monday through Friday. Off-Peak period shall be all remaining hours.*

See Linn County REC's Electric Tariff for complete Rate Information

